

# ONLINE SURVEY OF RAW MATERIAL COST AND YARN SELLING PRICE

130<sup>th</sup> SURVEY REPORT  
(March 2024)



THE SOUTH INDIA TEXTILE RESEARCH ASSOCIATION  
COIMBATORE

**ONLINE SURVEY OF RAW MATERIAL COST AND  
YARN SELLING PRICE**

**(130<sup>th</sup> survey comparing 62 mills data for March 2024)**

**Report prepared by**

**G.Santhana Krishnan**

**S.Raj Kumar**

**J.Sreenivasan**

**THE SOUTH INDIA TEXTILE RESEARCH ASSOCIATION  
COIMBATORE**

**Vol.11**

**April 2024**

**No.12**

## CONTENTS

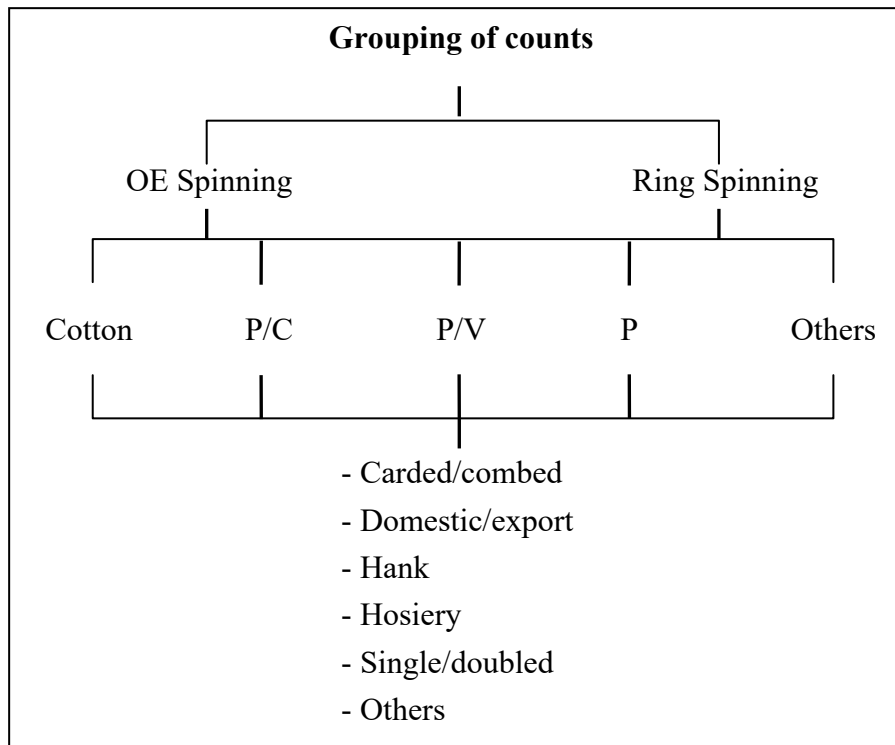
S. no.	Particulars	Page no.
1.	Introduction	1
2.	Methodology	1
3.	Participation in the 130 <sup>th</sup> survey	2
4.	Mills' reference numbers	2
5.	Highlights of the 130 <sup>th</sup> survey	3
6.	Market Performance Evaluation Index (MPEI)	4
7.	Trends: Movement of YSP,RMC and NOV of 10 popular counts between months	5
8.	Tips for mills to submit the data on time	6
9.	Announcement	6
10.	Acknowledgement	6
	Table A: Average YSP, RMC and NOV of counts and varieties of yarns having population of 3 and above	7
	Table B: Count-wise and mill-wise YSP, RMC, NOV, conversion cost, RMC as a % of YSP, yarn realisation, production/spindle (rotor) and yarn quality particulars	8
	Table C: Mill-wise counts and varieties of yarns marketed by the participant mills	44
	Table D: Movement of YSP, RMC and NOV in 11 popular counts between months	48
	Count descriptions	54
	Format for collecting data for 131 <sup>st</sup> survey	55

## 1. Introduction

The 129<sup>th</sup> survey report (February 2024 data) was uploaded on 21<sup>st</sup> March 2024. For this present 130<sup>th</sup> study, 62 mills from various parts of the country had submitted the data.

## 2. Methodology

From each mill, YSP, RMC, yarn quality, yarn realisation and production per spindle/rotor data pertaining to March 2024, for up to 10 counts/varieties of yarns manufactured by them, were collected online. Data submitted by the participant mills were scrutinised and grouped. Necessary care was taken to ensure that data obtained from the mills were reliable. Counts have been grouped as follows and presented in the report.



Time frame : In order to present the survey report to the participant mills at the earliest possible time, SITRA has fixed the following time frame.

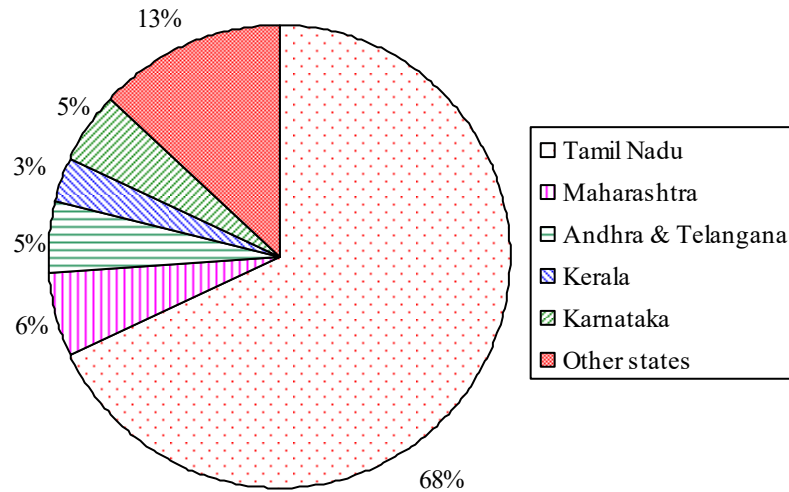
Data submission by the mills online : From 1<sup>st</sup> to 7<sup>th</sup> of every month.

Up loading of the survey report in the website by SITRA : 21<sup>st</sup> of every month

### 3. Participation in the 130<sup>th</sup> survey

Out of 61 mills that had participated in the 129<sup>th</sup> survey, 60 mills had submitted the data for the 130<sup>th</sup> survey also.

The survey participation profile shows that about 81% of the mills are from the 5 southern States, predominantly from Tamil Nadu (68%) followed by Maharashtra (6%) (Figure 1). The remaining mills (13%) are from 6 other States namely, Dadra & Nagar Haveli, Gujarat, Haryana, Madhya Pradesh, Punjab and Rajasthan.



**Figure 1** State-wise participation – 130<sup>th</sup> survey

### 4. Mills' reference numbers

Reference numbers for all the participant mills are allotted by the computer purely based on the time of submission of their data. For example, if a mill submits the data as first among the total participants in a survey, its reference number in that particular survey will be 1. In the next survey, the same mill's reference number would be different unless it submits the data first among the participants. This arrangement has been made to maintain the confidentiality of the participant mills. After logging in to the portal, the participant mill can know their reference number.

## 5. Highlights of the 130<sup>th</sup> Survey

### *Counts and varieties of yarns manufactured by the mills*

No. of mills that submitted the data	:	62
Total no. of counts	:	71
Total no. of counts and varieties of yarns	:	187
Range of counts	:	OE yarn : 2s to 20s Ring yarn : 6s to 125s
Number of counts and varieties of yarns having data of 3 or more mills	:	25
Lowest YSP	:	Rs 131 (2s OE)
Highest YSP	:	Rs 1235 (2/125s CH-ET-G-M)

### *Material-wise number of counts and varieties of yarns*

Type of raw material	No. of counts	No. of counts and varieties of yarns	No. of entries
Cotton			
- OE (rotor yarn)	5	6	13
- Ring yarn	42	138	268
Polyester cotton	12	31	35
Polyester viscose	5	5	5
100% Polyester	4	4	4
100% Cellulosic/blend	2	2	2
Air-jet yarn			
- 100% Viscose	1	1	1
<b>Total</b>	<b>71</b>	<b>187</b>	<b>328</b>

*Note: Cellulosic – other than viscose*

**Table A** shows the average YSP, RMC and NOV of counts and varieties of yarns having population of 3 and above.

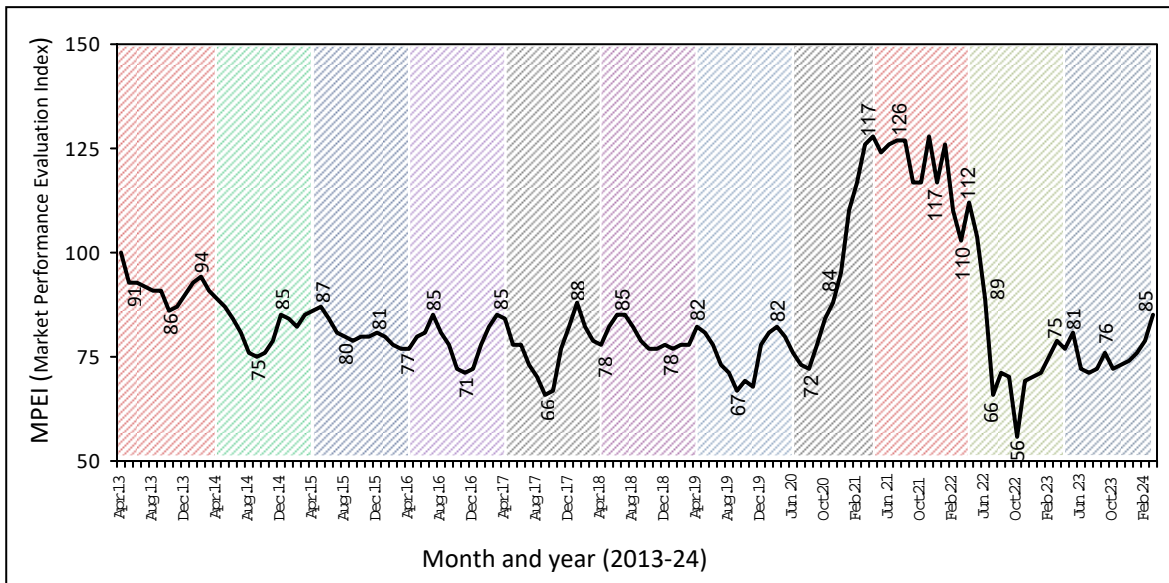
**Table B** gives count-wise and mill-wise YSP, RMC, NOV, conversion cost, RMC as a % of YSP, yarn realisation, production per spindle/rotor and yarn quality particulars.

**Table C** shows mill-wise counts and varieties of yarns marketed by the participating mills.

**Table D** gives movement of YSP, RMC and NOV in 11 different counts between months.

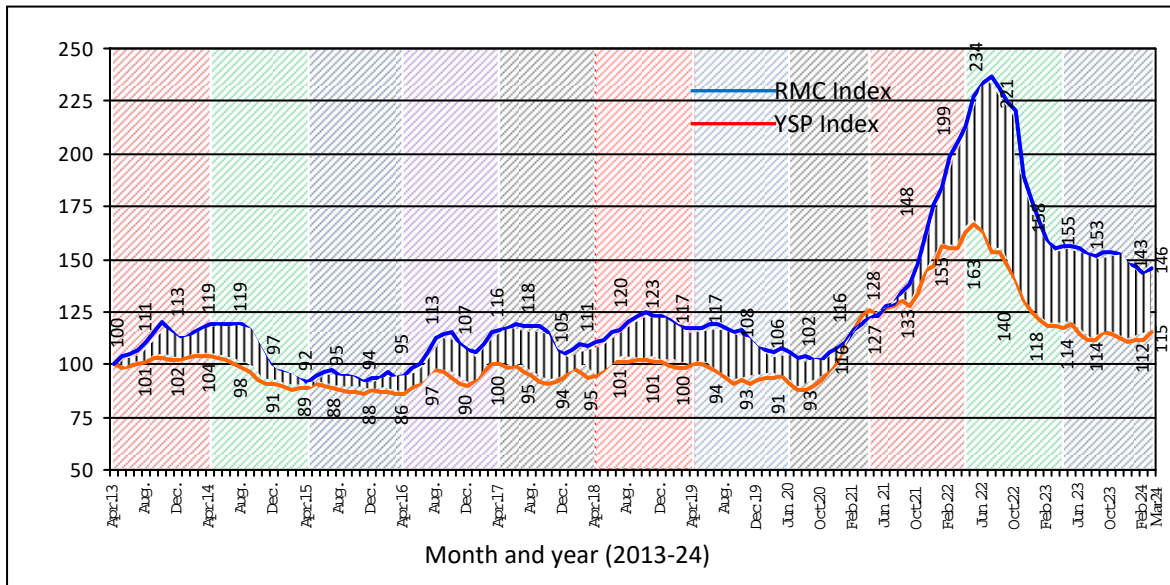
### 6. Market Performance Evaluation Index (MPEI) (Apr.2013 - Mar.2024)

The trend in the movement of MPEI (based on the average net output value in terms of Rs per kg of yarn i.e. yarn selling price minus clean raw material cost, covering 40s K, 40s C, 60s C, 80s C, 40s C-Comp., 50s C-Comp., 60s C-Comp., 80s C-Comp., 30s CH and 40s CH counts) for the past 130 months is shown in Figure 2.



**Figure 2** Market Performance Evaluation Index (MPEI)

In March 2024, MPEI registered at 85 index points, which is 6 index points higher than that prevailed in the previous month. The Raw Material Cost index (RMCI) and Yarn Selling Price index (YSPI) registered at 146 and 115 points respectively (Figure 3) which is 3 index points higher than that prevailed in the previous month.



**Figure 3** Yarn selling price index (YSPI) and Raw material cost index (RMCI)

An analysis of the performance of the counts considered for MPEI shows that in two-thirds of the counts (30s CH, 40s C-Comp., 60s C, 60s C-Comp., 80s C and 80s C-Comp.), the NOV had registered an increase in the range of 2.7% to 31.1% The NOV increase was significantly higher in 60s C and 80s C counts (24.1% and 31.1% respectively). On the other hand, in 50s C-Comp., 40s K and 40s C counts, the NOV had shown a reduction of 4.2%, 5.9% and 22.1% respectively. Invariably in all the counts, the yarn selling price had increased in comparison with that prevailed in the previous month.

## 7. Trends

### Movement of YSP, RMC and NOV of 11 popular counts between months

Table D shows the fluctuations in YSP, RMC and NOV between months for 11 popular counts and varieties of yarns. The same data has been given in the form of charts, the files for which are downloadable from the website.

Counts and varieties of yarns considered for the ‘TRENDS’

20s OE	80s C	80s C-Comp.
40s K	40s C-Comp.	30s CH
40s C	50s C-Comp.	40s CH
60s C	60s C-Comp.	



## **8. Tips for mills to submit the data on time**

- The website ([rmcysp.sitraonline.org](http://rmcysp.sitraonline.org)) is best viewed in Google Chrome (Ver.23.0 & higher) or Mozilla Firefox (Ver.16.0 & higher).
- Ensure that the requisite data are collected as per the enclosed format and submitted on or before 7<sup>th</sup> of every month. The format is also given in the home page of the website.
- Mills can also edit the data that had already submitted, till the midnight of 7<sup>th</sup>.
- Mills can contact SITRA staff, whose names and contact numbers are given in the website, for any assistance while submitting the data.

## **9. Announcement**

Data submission for 131<sup>st</sup> Survey (April 2024 data) commences on 1<sup>st</sup> May 2024 and ends on 7<sup>th</sup> May 2024.

## **10. Acknowledgement**

The Liaison & Consultation Division of SITRA, which is conducting this online survey, expresses its sincere gratitude to the managements of all the 62 mills for their participation in this survey.

**Table A** Average Yarn Selling Price (YSP), Raw Material Cost (RMC) and Net Output Value (NOV)

S. no.	Count	YSP (Rs/kg)	RMC (Rs/kg of yarn)	NOV		RMC as % of YSP	No. of mills
				Rs/kg of yarn	Rs/spl. (or rotor) /shift		
1.	20s K	235	185	50	14.0	79	4
2.	40s K	270	206	64	7.1	76	4
3.	41s K	252	190	62	6.4	76	4
4.	16s C	241	204	37	14.6	85	3
5.	60s C	338	204	134	7.9	60	5
6.	40s C-Comp.	289	203	86	12.5	70	9
7.	50s C-Comp.	322	207	115	12.4	65	5
8.	60s C-Comp.	339	199	140	10.6	59	14
9.	60s C-Comp.-Premium	555	336	219	15.6	60	3
10.	61s C-Comp.	333	203	130	10.3	61	7
11.	80s C-Comp.	415	224	191	8.5	54	10
12.	92s C-Comp.	411	229	182	5.7	56	3
13.	100s C-Comp.	508	236	272	8.8	47	5
14.	100s C-Comp.-Premium	787	405	382	12.0	53	3
15.	105s C-Comp.	502	245	257	6.5	49	6
16.	26s CH	255	205	50	11.6	80	3
17.	30s CH	268	210	58	11.8	78	4
18.	25s CH-Comp.	263	204	59	15.7	78	4
19.	30s CH-Comp.	266	198	68	14.6	75	10
20.	34s CH-Comp.	279	199	80	14.6	72	5
21.	36s CH-Comp.	288	192	96	17.8	67	3
22.	40s CH-Comp.	287	200	87	12.7	70	7
23.	40s CH-Comp.-Ex.	282	199	83	13.0	71	4
24.	16s OE	172	138	34	71.5	81	4
25.	20s OE	176	137	39	54.0	78	5

Note: Yarn selling price = Ex-mill price; Raw material cost = Clean material cost

**Table B** Count-wise and mill-wise YSP, RMC, NOV, TCI, RMC as a % of YSP, yarn realisation, production/spindle (rotor) and yarn quality particulars

Mill ref. no.	Actual count	Yarn selling price (Rs/kg)	Raw material cost (Rs/kg of yarn)	Net out-put value			RMC as % of YSP	Avg. spl. speed (rpm)	TPI	Prodn./spl. /8 hrs. (g)	Yarn realisation (%)	Yarn quality							
				Rs/kg of yarn*	Rs/spl. /8 hrs.**	Count CV%						Strength CV%	CSP@	U%	Imperfections/1000 m			Hairiness index	
															Thin	Thick	Neps		Total
<b>Ring spun yarn</b>																			
<b>Cotton carded yarn</b>																			
<i>Domestic market</i>																			
10s K																			
39	10s	212	166	46	24.5	78	-	13.5	532	85.2	1.0	-	2500	12.2	13	109	92	214	-
16s K																			
24	16s	215	190	25	8.3	88	-	-	330	85.0	-	-	-	-	-	-	-	-	-
20s K																			
39	20s	232	166	66	19.8	72	-	18.0	300	85.2	1.4	4.0	2320	14.6	78	600	630	1308	-
43	20s	244	193	51	13.9	79	-	-	272	84.7	1.0	3.0	2670	11.5	1	152	143	296	7.5
44	20s	235	207	28	5.4	88	-	-	194	86.7	1.5	4.8	2520	10.9	1	97	100	198	10.1
59	20s	228	173	55	17.0	76	-	-	309	83.7	1.1	3.4	2540	11.5	2	137	143	282	8.2
Avg.	20s	235	185	50	14.0	79	-	-	269	85.1	1.2	3.8	2510	12.1	21	247	254	522	8.6
32s K																			
44	32s	252	207	45	5.1	82	-	-	113	86.7	1.6	4.7	2400	13.4	27	417	765	1209	8.1

**Table B (contd...)**

Mill ref. no.	Actual count	Yarn selling price (Rs/kg)	Raw material cost (Rs/kg of yarn)	Net out-put value				Avg. spl. speed (rpm)	TPI	Prodn./spl. /8 hrs. (g)	Yarn realisation (%)	Yarn quality							
				Rs/kg of yarn*	Rs/spl. /8 hrs.**	RMC as % of YSP	Count CV%					Strength CV%	CSP@	U%	Imperfections/1000 m			Hairiness index	
															Thin	Thick	Neps		Total
42	-	234	190	44	6.1	81	-	-	34s K 138	84.5	1.1	4.1	2250	9.0	32	498	580	1110	-
17	39s	290	214	76	8.4	74	-	-	40s K 110	86.3	-	3.2	2620	15.3	122	819	2093	3034	-
37	40s	256	180	76	8.5	70	-	-	112	85.2	1.9	4.9	2430	12.9	24	345	755	1124	-
41	41s	285	221	64	7.0	78	18000	27.6	110	86.0	1.4	4.9	2320	14.5	108	660	1563	2331	-
44	40s	250	207	43	4.3	83	-	-	100	86.7	1.8	4.2	2290	14.8	110	821	1442	2373	7.1
Avg.	40s	270	206	64	7.1	76	-	-	108	86.1	1.7	4.3	2420	14.4	91	661	1463	2215	-
37	41s	262	180	82	8.6	69	-	-	41s K 105	85.2	2.0	4.6	2410	13.1	30	376	742	1148	-
44	41s	247	207	40	3.8	84	-	-	96	86.7	1.6	4.6	2320	14.4	78	685	1329	2092	6.9
47	42s	248	188	60	6.5	76	18450	28.0	108	84.8	1.7	6.0	2250	13.8	20	660	1100	1780	5.0
49	42s	249	185	64	6.5	74	-	-	101	86.5	1.5	3.3	2500	13.8	48	522	701	1271	-
Avg.	41s	252	190	62	6.4	76	-	-	103	85.8	1.7	4.6	2370	13.8	44	561	968	1573	-
4	43s	248	191	57	5.1	77	-	-	42s K 89	85.5	1.7	3.3	2410	14.6	57	764	1234	2055	-
41	60s	341	221	120	7.1	65	17500	34.8	60s K 59	86.0	1.3	-	2080	14.4	616	1248	2552	4416	-

**Table B (contd...)**

Mill ref. no.	Actual count	Yarn selling price (Rs/kg)	Raw material cost (Rs/kg of yarn)	Net out-put value		RMC as % of YSP	Avg. spl. speed (rpm)	TPI	Prodn./spl. /8 hrs. (g)	Yarn realisation (%)	Yarn quality								
				Rs/kg of yarn*	Rs/spl. /8 hrs.**						Count CV%	Strength CV%	CSP@	U%	Imperfections/1000 m				Hairiness index
															Thin	Thick	Neps	Total	
2/20s K																			
24	10s	240	190	50	12.5	79	-	-	250	85.0	-	-	-	-	-	-	-	-	-
42	-	259	190	69	18.5	73	-	-	268	84.5	1.1	4.1	2450	9.0	0	12	18	30	-
Avg.	-	250	190	60	15.5	76	-	-	259	84.8	-	-	-	-	-	-	-	-	-
2/30s K																			
42	-	292	191	101	15.7	65	-	-	155	86.0	1.1	4.5	2150	12.0	0	28	56	84	-
2/40s K-ET																			
43	20s	246	193	53	12.8	78	-	-	242	84.7	1.0	3.1	2990	11.2	1	126	180	307	5.9
6s K-Slub																			
8	6s	285	213	72	34.2	75	9300	12.2	475	85.9	1.0	3.0	1840	31.3	622	5110	336	6068	-
8s K-Slub																			
8	8s	233	180	53	19.5	77	8800	14.7	367	84.5	1.1	3.8	1740	28.2	826	2580	636	4042	-
2/10s K-Slub																			
42	-	246	190	56	26.1	77	-	-	466	84.5	1.1	4.5	2150	12.0	10	1430	2060	3500	-
20s K-Comp.																			
1	20s	245	183	62	15.2	75	16500	22.8	245	85.2	1.5	4.5	2850	11.4	5	245	236	486	6.9
22	21s	250	194	56	16.8	78	18500	18.6	300	85.0	1.0	3.6	2820	10.8	0	89	107	196	5.5
Avg.	20s	248	189	59	16.0	77	17500	20.7	273	85.1	1.3	4.0	2840	11.1	3	167	172	342	6.2

**Table B (contd...)**

Mill ref. no.	Actual count	Yarn selling price (Rs/kg)	Raw material cost (Rs/kg of yarn)	Net out-put value			RMC as % of YSP	Avg. spl. speed (rpm)	TPI	Prodn./spl. /8 hrs. (g)	Yarn realisation (%)	Yarn quality							
				Rs/kg of yarn*	Rs/spl. /8 hrs.**	Count CV%						Strength CV%	CSP@	U%	Imperfections/1000 m				Hairiness index
															Thin	Thick	Neps	Total	
30s K-Comp.																			
22	31s	277	194	83	11.5	70	18000	24.4	139	85.0	1.0	-	2900	12.6	7	316	553	876	5.1
59	30s	247	152	95	19.6	62	-	-	206	81.2	1.0	3.2	2730	13.1	7	485	947	1439	5.2
Avg.	30s	262	173	89	15.6	66	-	-	173	83.1	1.0	-	2820	12.9	7	401	750	1158	5.2
32s K-Comp.																			
49	33s	238	185	53	8.6	78	-	-	162	86.5	1.3	2.9	2830	11.8	3	224	413	640	-
41s K-Comp.																			
37	41s	268	180	88	9.5	67	-	-	108	85.2	2.0	5.1	2730	13.2	25	351	782	1158	-
49	42s	254	185	69	7.2	73	-	-	105	86.5	1.5	-	2820	12.8	14	386	660	1060	-
Avg.	41s	261	183	78	8.4	70	-	-	107	85.9	1.7	-	2780	13.0	20	369	721	1110	-
56s K-Comp.																			
33	56s	256	189	67	-	74	18400	22.2	-	88.9	1.3	4.5	2100	13.2	40	500	1500	2040	-
Hank yarn																			
40s K-SHPR																			
41	40s	298	221	77	8.5	74	18000	27.6	110	86.0	1.4	4.9	2320	14.5	108	660	1563	2331	-
2/20s K-SHPR																			
52	10s	267	178	89	24.2	67	-	19.1	272	84.0	1.3	4.9	2580	8.7	0	7	12	19	9.7

**Table B (contd...)**

Mill ref. no.	Actual count	Yarn selling price (Rs/kg)	Raw material cost (Rs/kg of yarn)	Net out-put value				Avg. spl. speed (rpm)	TPI	Prodn./ spl. /8 hrs. (g)	Yarn reali- sation (%)	Yarn quality							
				Rs/kg of yarn *	Rs/ spl. /8 hrs. **	RMC as % of YSP	Count CV%					Strength CV%	CSP@	U%	Imperfections/1000 m				Hairi- ness index
															Thin	Thick	Neps	Total	
Hosiery yarn																			
14s KH																			
26	14s	215	176	39	19.3	82	14900	14.4	495	84.2	1.7	4.6	2610	10.2	0	66	57	123	9.8
25s KH																			
58	24s	249	189	60	14.8	76	-	-	246	85.8	1.4	4.5	2200	11.5	4	267	120	391	7.5
30s KH																			
26	30s	232	178	54	10.3	77	17840	21.2	191	85.4	1.5	5.3	2430	11.4	1	137	353	491	8.2
58	29s	258	189	69	13.4	73	-	-	194	85.8	1.4	4.5	2100	12.0	8	425	245	678	6.8
Avg.	29s	245	184	61	11.9	75	-	-	193	85.6	1.5	4.9	2270	11.7	5	281	299	585	7.5
40s KH																			
18	37s	258	197	61	6.6	76	-	-	108	86.0	1.6	5.4	2370	12.9	19	351	680	1050	-
44	38s	244	184	60	6.6	75	-	-	110	86.5	1.4	4.7	2240	13.6	53	494	800	1347	7.5
Avg.	38s	251	191	60	6.6	76	-	-	109	86.3	1.5	5.0	2310	13.3	36	423	740	1199	-
25s KH-Slub																			
28	24s	284	178	106	22.0	63	15000	20.5	208	86.0	1.2	3.2	2430	20.8	135	2471	477	3083	-
38s KH-Comp.																			
35	38s	260	185	75	10.6	71	20250	-	141	88.3	-	-	-	-	-	-	-	-	-

**Table B (contd...)**

Mill ref. no.	Actual count	Yarn selling price (Rs/kg)	Raw material cost (Rs/kg of yarn)	Net out-put value			RMC as % of YSP	Avg. spl. speed (rpm)	Prodn./ spl. /8 hrs. (g)	Yarn realisation (%)	Yarn quality							
				Rs/kg of yarn *	Rs/ spl. /8 hrs. **	Count CV%					Strength CV%	CSP@	U%	Imperfections/1000 m				Hairiness index
														Thin	Thick	Neps	Total	
Export market																		
18	37s	263	197	66	10.6	75	-	40s KH-Comp. - 160	86.0	1.4	4.5	2750	12.3	14	346	493	853	-
24	20s	220	190	30	7.5	86	-	20s K-Ex. - 250	85.0	-	-	-	-	-	-	-	-	-
24	11s	250	190	60	13.8	76	-	2/22s K-Ex. - 230	85.0	-	-	-	-	-	-	-	-	-
52	12s	255	195	60	12.2	76	16760	2/23s K-Ex. 21.6 203	84.0	1.1	3.5	2820	8.7	0	11	25	36	9.6
52	15s	294	195	99	14.2	66	18300	2/30s K-Ex. 23.9 143	84.0	1.6	4.5	2630	9.3	0	23	45	68	9.8
46	41s	355	159	196	21.0	45	-	41s K-Comp.-Ex. - 107	-	1.5	5.7	2930	11.5	4	156	430	590	-
Hosiery yarn																		
26	-	253	171	82	27.4	68	16100	2/20s KH-Ex. 16.9 334	86.0	1.2	4.6	2530	9.4	0	30	12	42	11.4



**Table B (contd...)**

Mill ref. no.	Actual count	Yarn selling price (Rs/kg)	Raw material cost (Rs/kg of yarn)	Net out-put value		RMC as % of YSP	Avg. spl. speed (rpm)	TPI	Prodn./spl. /8 hrs. (g)	Yarn realisation (%)	Yarn quality								
				Rs/kg of yarn*	Rs/spl. /8 hrs.**						Count CV%	Strength CV%	CSP@	U%	Imperfections/1000 m			Hairiness index	
															Thin	Thick	Neps		Total
26	-	243	171	72	20.3	70	16500	18.2	282	86.0	1.4	4.3	2630	9.9	0	45	22	67	10.5
<i>2/22s KH-Ex.</i>																			
26	-	223	171	52	13.0	77	17200	19.1	250	86.0	1.3	5.1	2480	9.4	0	25	17	42	10.3
<i>2/24s KH-Ex.</i>																			
<b>Cotton combed yarn</b>																			
<i>Domestic market</i>																			
<i>40s SC</i>																			
12	40s	260	186	74	9.4	72	19330	26.1	127	82.3	1.2	4.6	2620	13.1	32	405	894	1331	6.3
<i>52s SC-Comp.</i>																			
12	52s	302	186	116	8.4	62	19220	30.3	72	82.3	1.2	4.3	2850	13.5	59	515	1262	1836	3.8
<i>16s C</i>																			
24	16s	235	210	25	9.5	89	-	-	380	70.0	-	-	-	-	-	-	-	-	-
43	16s	250	209	41	15.9	84	-	-	389	70.5	1.0	3.0	2890	7.9	0	5	7	12	8.2
59	16s	239	194	45	18.3	81	-	-	407	65.8	1.0	3.1	3040	8.2	0	4	7	11	8.3
<i>Avg.</i>	<i>16s</i>	<i>241</i>	<i>204</i>	<i>37</i>	<i>14.6</i>	<i>85</i>	<i>-</i>	<i>-</i>	<i>392</i>	<i>68.8</i>	<i>1.0</i>	<i>3.0</i>	<i>2970</i>	<i>8.1</i>	<i>0</i>	<i>5</i>	<i>7</i>	<i>12</i>	<i>8.3</i>

**Table B (contd...)**

Mill ref. no.	Actual count	Yarn selling price (Rs/kg)	Raw material cost (Rs/kg of yarn)	Net out-put value				Yarn quality											
				Rs/kg of yarn *	Rs/spl. /8 hrs. **	RMC as % of YSP	Avg. spl. speed (rpm)	TPI	Prodn./spl. /8 hrs. (g)	Yarn realisation (%)	Count CV%	Strength CV%	CSP®	U%	Imperfections/1000 m				Hairiness index
															Thin	Thick	Neps	Total	
43	20s	272	209	63	19.2	77	-	-	20s C 304	70.5	1.0	-	2950	8.4	0	7	14	21	7.5
37	40s	284	207	77	8.9	73	-	-	40s C 115	69.6	1.6	5.0	2610	10.4	1	43	109	153	-
44	40s	285	228	57	5.2	80	-	-	91	71.4	1.4	4.3	2620	11.0	3	63	137	203	6.2
Avg.	40s	285	218	67	7.1	77	-	-	103	70.5	1.5	4.6	2620	10.7	2	53	123	178	-
12	55s	293	207	86	6.2	71	19090	31.8	54s C 72	72.2	1.3	4.6	2710	11.6	23	90	235	348	4.8
19	61s	335	201	134	6.6	60	15000	34.0	60s C 49	61.4	1.9	5.0	2590	12.2	43	116	216	375	4.5
20	60s	344	225	119	7.4	65	-	-	62	58.8	1.4	4.8	2560	11.3	15	79	265	359	-
30	61s	333	212	121	7.7	64	18750	33.1	64	67.1	1.4	4.0	2600	11.2	9	55	209	273	4.5
46	60s	330	200	130	7.4	61	-	-	57	66.3	1.2	4.1	2640	11.4	17	84	190	291	-
55	60s	348	182	166	10.5	52	-	-	63	73.1	1.6	4.9	2460	-	-	-	-	-	-
Avg.	60s	338	204	134	7.9	60	-	-	59	65.3	1.5	4.5	2570	11.5	21	84	220	325	-
12	61s	313	207	106	7.0	66	19480	33.7	61s C 66	72.2	1.3	4.4	2600	12.0	41	123	318	482	4.8
30	69s	351	212	139	7.2	60	18600	35.6	67s C 52	67.1	1.2	3.8	2590	11.9	32	81	251	364	4.3

**Table B (contd...)**

Mill ref. no.	Actual count	Yarn selling price (Rs/kg)	Raw material cost (Rs/kg of yarn)	Net out-put value				Yarn quality											
				Rs/kg of yarn *	Rs/spl. /8 hrs. **	RMC as % of YSP	Avg. spl. speed (rpm)	TPI	Prodn./spl. /8 hrs. (g)	Yarn realisation (%)	Count CV%	Strength CV%	CSP@	U%	Imperfections/1000 m				Hairiness index
															Thin	Thick	Neps	Total	
80s C																			
25	80s	378	197	181	6.5	52	-	-	36	63.9	1.2	-	2360	13.0	105	226	625	956	4.0
46	80s	450	200	250	8.5	44	-	-	34	66.3	1.1	4.6	2400	13.2	72	204	257	533	-
Avg.	80s	414	199	215	7.5	48	-	-	35	65.1	1.1	-	2380	13.1	89	215	441	745	-
90s C																			
19	90s	395	226	169	4.2	57	15000	39.5	25	61.4	1.8	4.5	2420	14.6	229	320	686	1235	3.9
30	91s	400	212	188	5.8	53	17200	41.5	31	67.1	1.4	4.1	2420	12.9	98	176	430	704	3.6
Avg.	90s	398	219	179	5.0	55	16100	40.5	28	64.3	1.6	4.3	2420	13.8	164	248	558	970	3.8
92s C																			
16	92s	381	219	162	5.2	57	-	-	32	72.6	2.1	5.3	2360	12.8	44	377	773	1194	-
30	93s	411	212	199	6.0	52	17000	41.5	30	67.1	1.3	4.2	2420	12.6	69	140	411	620	3.9
Avg.	92s	396	216	180	5.6	55	-	-	31	69.9	1.7	4.8	2390	12.7	57	259	592	908	-
105s C																			
19	105s	510	249	261	6.3	49	15000	42.5	24	60.7	1.7	4.7	2520	14.0	277	375	616	1268	3.5
25	105s	492	300	192	5.2	61	-	-	27	63.0	1.2	-	2810	13.1	117	205	673	995	3.5
Avg.	105s	501	275	226	5.8	55	-	-	26	61.9	1.4	-	2670	13.6	197	290	645	1132	3.5
60s C-HT																			
46	60s	450	200	250	12.0	44	-	-	48	66.3	1.3	4.7	2690	11.5	16	93	228	337	-
2/40s C-ET																			
59	20s	256	179	77	23.0	70	-	-	299	63.0	1.2	3.7	3190	7.9	0	7	9	16	5.2

**Table B (contd...)**

Mill ref. no.	Actual count	Yarn selling price (Rs/kg)	Raw material cost (Rs/kg of yarn)	Net out-put value			RMC as % of YSP	Avg. spl. speed (rpm)	TPI	Prodn./spl. /8 hrs. (g)	Yarn realisation (%)	Yarn quality							
				Rs/kg of yarn*	Rs/spl. /8 hrs.**	Count CV%						Strength CV%	CSP@	U%	Imperfections/1000 m				Hairiness index
															Thin	Thick	Neps	Total	
2/120s C-ET																			
31	60s	369	200	169	9.1	54	16330	33.1	54	71.8	1.6	5.3	3350	10.4	12	31	103	146	2.7
30s C-Slub																			
39	30s	294	193	101	18.6	66	-	22.1	184	69.4	1.4	4.1	2570	-	-	-	-	-	-
40s C-Slub																			
39	41s	334	193	141	17.6	58	-	27.3	125	69.4	1.4	4.1	2590	-	-	-	-	-	-
60s C-Slub																			
12	59s	375	226	149	8.9	60	19290	35.8	60	68.4	1.2	4.3	2560	18.2	210	1857	852	2919	4.5
39	61s	377	193	184	10.5	51	-	36.5	57	69.4	1.4	4.1	2430	-	-	-	-	-	-
Avg.	60s	376	210	166	9.7	56	-	36.2	59	68.9	1.3	4.2	2500	-	-	-	-	-	-
40s C-CS																			
39	41s	392	212	180	13.1	54	-	29.0	73	69.4	1.4	4.0	1950	10.5	2	41	26	69	-
44	40s	408	207	201	8.6	51	-	-	43	70.0	1.4	4.1	2090	10.7	2	49	66	117	4.6
Avg.	40s	400	210	190	10.9	53	-	-	58	69.7	1.4	4.0	2020	10.6	2	45	46	93	-
30s C-Comp.																			
43	30s	248	209	39	7.3	84	-	-	188	70.5	1.1	-	2970	9.3	0	13	32	45	4.7
59	30s	263	170	93	20.3	65	-	-	218	63.2	1.0	3.9	3040	9.6	0	24	68	92	4.9
Avg.	30s	256	190	66	13.8	75	-	-	203	66.9	1.1	-	3010	9.5	0	19	50	69	4.8

**Table B (contd...)**

Mill ref. no.	Actual count	Yarn selling price (Rs/kg)	Raw material cost (Rs/kg of yarn)	Net out-put value		RMC as % of YSP	Avg. spl. speed (rpm)	TPI	Prodn./spl. /8 hrs. (g)	Yarn realisation (%)	Yarn quality								
				Rs/kg of yarn*	Rs/spl. /8 hrs.**						Count CV%	Strength CV%	CSP@	U%	Imperfections/1000 m				Hairiness index
															Thin	Thick	Neps	Total	
<b>30s C-Comp.-Premium</b>																			
7	30s	470	314	156	30.4	67	19160	22.4	195	73.0	1.2	-	-	-	-	-	-	-	-
<b>32s C-Comp.</b>																			
22	33s	274	216	58	8.9	79	19800	24.3	153	73.1	1.7	-	3160	9.8	0	33	87	120	4.8
<b>40s C-Comp.</b>																			
15	40s	303	193	110	17.2	64	21600	23.1	156	71.7	1.1	3.7	3200	9.5	0	11	41	52	3.2
21	40s	281	190	91	16.5	68	-	-	181	71.6	1.2	3.5	3100	9.7	0	27	48	75	4.2
23	41s	281	190	91	14.2	68	-	-	156	71.7	1.0	4.0	3240	9.7	1	16	83	100	4.0
25	40s	276	188	88	11.0	68	-	-	125	71.3	1.0	-	2920	9.2	1	17	94	112	3.4
35	40s	282	210	72	10.6	74	-	-	147	72.3	-	-	-	-	-	-	-	-	-
44	40s	293	228	65	6.9	78	-	-	106	71.4	1.7	3.9	3000	10.2	2	39	117	158	4.7
48	40s	295	212	83	11.2	72	21000	24.5	135	69.5	1.4	4.2	2940	10.4	2	45	122	169	-
53	40s	300	210	90	11.3	70	-	-	125	71.0	1.1	4.2	3060	10.8	0	35	120	155	3.1
60	40s	293	203	90	13.4	69	-	-	149	70.4	1.5	4.8	3540	9.4	1	14	35	50	3.8
<i>Avg.</i>	<i>40s</i>	<i>289</i>	<i>203</i>	<i>86</i>	<i>12.5</i>	<i>70</i>	<i>-</i>	<i>-</i>	<i>142</i>	<i>71.2</i>	<i>1.2</i>	<i>4.0</i>	<i>3130</i>	<i>9.9</i>	<i>1</i>	<i>26</i>	<i>83</i>	<i>110</i>	<i>3.8</i>
<b>40s C-Comp.-Premium</b>																			
7	40s	495	314	181	25.3	63	21200	25.9	140	73.0	1.3	-	-	-	-	-	-	-	-
<b>41s C-Comp.</b>																			
23	41s	283	190	93	14.2	67	-	-	153	71.7	1.0	3.8	3220	10.0	2	22	110	134	3.7
54	41s	310	187	123	16.6	60	-	-	135	70.4	-	-	-	-	-	-	-	-	-
<i>Avg.</i>	<i>41s</i>	<i>297</i>	<i>189</i>	<i>108</i>	<i>15.4</i>	<i>64</i>	<i>-</i>	<i>-</i>	<i>144</i>	<i>71.1</i>	<i>-</i>	<i>-</i>	<i>-</i>	<i>-</i>	<i>-</i>	<i>-</i>	<i>-</i>	<i>-</i>	<i>-</i>

**Table B (contd...)**

Mill ref. no.	Actual count	Yarn selling price (Rs/kg)	Raw material cost (Rs/kg of yarn)	Net out-put value				Yarn quality											
				Rs/kg of yarn *	Rs/spl. /8 hrs. **	RMC as % of YSP	Avg. spl. speed (rpm)	TPI	Prodn./spl. /8 hrs. (g)	Yarn realisation (%)	Count CV%	Strength CV%	CSP@	U%	Imperfections/1000 m				Hairiness index
															Thin	Thick	Neps	Total	
<i>50s C-Comp.</i>																			
21	50s	324	190	134	17.4	59	-	-	130	71.6	1.3	3.8	3100	9.9	3	35	78	116	3.6
35	50s	316	216	100	10.0	68	-	-	100	69.3	-	-	-	-	-	-	-	-	-
39	51s	308	193	115	11.4	63	-	27.3	99	69.4	1.3	3.9	3180	10.2	3	27	62	92	-
60	50s	305	208	97	10.0	68	-	-	103	69.4	1.5	4.4	3470	9.9	2	10	30	42	3.5
61	50s	355	229	126	13.1	65	-	-	104	76.2	1.3	3.9	3660	9.3	1	6	12	19	3.0
<i>Avg.</i>	<i>50s</i>	<i>322</i>	<i>207</i>	<i>115</i>	<i>12.4</i>	<i>65</i>	<i>-</i>	<i>-</i>	<i>107</i>	<i>71.2</i>	<i>1.3</i>	<i>4.0</i>	<i>3350</i>	<i>9.8</i>	<i>2</i>	<i>20</i>	<i>46</i>	<i>68</i>	<i>3.4</i>
<i>60s C-Comp.</i>																			
3	60s	321	214	107	7.9	67	19880	31.6	74	70.2	1.6	5.0	3220	10.2	3	28	91	122	3.7
15	61s	342	193	149	11.8	56	22500	30.8	79	71.7	1.0	3.7	3140	10.3	4	26	103	133	2.7
19	61s	345	201	144	7.3	58	15000	31.0	51	61.3	1.7	4.3	2880	10.8	8	52	146	206	3.3
21	60s	341	190	151	14.9	56	-	-	99	71.6	1.4	4.1	3000	11.0	18	55	152	225	3.4
22	61s	332	216	116	7.3	65	19500	32.5	63	73.1	1.6	-	2930	11.8	8	147	300	455	4.0
23	60s	333	190	143	11.2	57	-	-	78	71.7	1.0	3.5	3160	10.7	9	23	80	112	3.2
39	61s	333	193	140	10.9	58	-	30.1	78	69.4	1.3	4.0	3110	10.5	6	26	62	94	-
44	60s	334	207	127	7.2	62	-	-	57	70.0	1.7	3.9	3060	11.0	8	71	163	242	3.9
48	60s	332	212	120	8.3	64	20500	32.1	69	69.5	1.4	4.1	2850	11.2	10	87	239	336	-
53	60s	335	218	117	8.9	65	-	-	76	72.0	1.4	4.7	3040	10.7	3	64	137	204	2.7
54	60s	355	185	170	12.6	52	-	-	74	70.4	-	-	-	-	-	-	-	-	-
55	60s	341	188	153	12.9	55	-	-	84	71.3	1.4	4.0	3250	10.5	6	53	151	210	3.4
55	60s	352	188	164	12.8	53	-	-	78	71.3	1.4	4.2	3220	10.7	6	67	194	267	3.5
55	60s	348	188	160	14.4	54	-	-	90	71.3	1.2	3.9	3300	10.1	3	32	128	163	3.4
<i>Avg.</i>	<i>60s</i>	<i>339</i>	<i>199</i>	<i>140</i>	<i>10.6</i>	<i>59</i>	<i>-</i>	<i>-</i>	<i>75</i>	<i>70.3</i>	<i>1.4</i>	<i>4.1</i>	<i>3090</i>	<i>10.7</i>	<i>7</i>	<i>56</i>	<i>150</i>	<i>213</i>	<i>3.4</i>

**Table B (contd...)**

Mill ref. no.	Actual count	Yarn selling price (Rs/kg)	Raw material cost (Rs/kg of yarn)	Net out-put value				Yarn quality											
				Rs/kg of yarn *	Rs/spl. /8 hrs.**	RMC as % of YSP	Avg. spl. speed (rpm)	TPI	Prodn./spl. /8 hrs. (g)	Yarn realisation (%)	Count CV%	Strength CV%	CSP@	U%	Imperfections/1000 m				Hairiness index
																Thin	Thick	Neps	Total
<b>60s C-Comp.-Premium</b>																			
7	60s	560	314	246	17.7	56	20120	31.7	72	73.0	1.3	-	-	-	-	-	-	-	-
13	60s	578	372	206	14.2	64	19560	32.0	69	69.0	1.1	3.2	4170	9.9	2	10	30	42	2.9
61	60s	527	321	206	14.8	61	-	-	72	71.1	1.3	4.6	4170	9.3	0	5	16	21	3.1
<i>Avg.</i>	<i>60s</i>	<i>555</i>	<i>336</i>	<i>219</i>	<i>15.6</i>	<i>60</i>	<i>19840</i>	<i>31.9</i>	<i>71</i>	<i>71.0</i>	<i>1.2</i>	<i>3.9</i>	<i>4170</i>	<i>9.6</i>	<i>1</i>	<i>8</i>	<i>23</i>	<i>32</i>	<i>3.0</i>
<b>61s C-Comp.</b>																			
12	61s	321	207	114	8.2	64	20540	31.2	72	72.2	1.2	4.1	3060	11.0	13	52	174	239	3.2
18	61s	325	206	119	8.9	63	-	-	75	74.0	1.5	5.2	2850	11.8	22	159	450	631	-
21	61s	344	190	154	14.9	55	-	-	97	71.6	1.4	4.1	3000	11.1	20	60	158	238	3.4
32	62s	348	205	143	10.3	59	-	-	72	68.6	1.1	3.5	3020	10.6	10	40	63	113	3.2
34	61s	324	218	106	8.6	67	21900	29.8	81	74.6	1.1	4.9	3210	10.7	8	43	100	151	2.6
37	61s	327	207	120	7.4	63	-	-	62	69.6	1.9	5.1	2860	11.4	14	90	168	272	-
55	61s	342	188	154	13.6	55	-	-	88	71.3	1.3	4.3	3190	10.7	10	64	168	242	3.5
<i>Avg.</i>	<i>61s</i>	<i>333</i>	<i>203</i>	<i>130</i>	<i>10.3</i>	<i>61</i>	<i>-</i>	<i>-</i>	<i>78</i>	<i>71.7</i>	<i>1.4</i>	<i>4.5</i>	<i>3030</i>	<i>11.0</i>	<i>14</i>	<i>73</i>	<i>183</i>	<i>270</i>	<i>3.2</i>
<b>63s C-Comp.</b>																			
55	63s	355	188	167	12.2	53	-	-	73	71.3	1.5	4.5	3100	11.2	13	92	231	336	3.5
<b>70s C-Comp.</b>																			
61	70s	426	229	197	11.6	54	-	-	59	76.2	1.2	4.3	3480	10.5	7	23	41	71	3.0
<b>70s C-Comp.-Premium</b>																			
29	70s	810	411	399	21.9	51	20300	34.8	55	67.0	1.2	5.1	3890	10.5	6	39	89	134	2.5

**Table B (contd...)**

Mill ref. no.	Actual count	Yarn selling price (Rs/kg)	Raw material cost (Rs/kg of yarn)	Net out-put value				Yarn quality											
				Rs/kg of yarn *	Rs/spl. /8 hrs.**	RMC as % of YSP	Avg. spl. speed (rpm)	TPI	Prodn./spl. /8 hrs. (g)	Yarn realisation (%)	Count CV%	Strength CV%	CSP@	U%	Imperfections/1000 m				Hairiness index
															Thin	Thick	Neps	Total	
76s C-Comp.																			
20	76s	390	225	165	8.4	58	-	-	51	58.8	1.4	4.7	2860	12.2	45	128	316	489	-
46	76s	405	257	148	6.7	63	-	-	45	56.0	1.2	3.7	2880	11.9	22	172	281	475	-
Avg.	76s	398	241	157	7.6	61	-	-	48	57.4	1.3	4.2	2870	12.1	34	150	299	483	-
80s C-Comp.																			
6	81s	405	219	186	7.8	54	-	-	42	67.4	-	-	-	-	-	-	-	-	-
12	80s	392	226	166	6.6	58	18270	39.0	40	68.4	1.3	4.5	3020	11.5	30	79	204	313	3.0
15	80s	461	225	236	12.3	49	21400	34.8	52	70.9	1.0	3.8	3320	10.9	17	37	111	165	2.2
20	80s	410	225	185	8.5	55	-	-	46	58.8	1.4	4.8	2850	12.3	47	132	336	515	-
20	80s	445	231	214	9.6	52	-	-	45	69.0	1.4	4.7	2860	11.2	12	77	178	267	-
30	80s	390	212	178	8.4	54	19700	35.8	47	67.1	1.3	4.0	2980	11.8	29	84	202	315	2.6
31	81s	426	206	220	9.7	48	19000	36.0	44	70.0	1.5	4.7	3190	11.7	33	61	171	265	2.7
38	82s	390	222	168	6.2	57	-	-	37	68.6	1.4	4.3	2850	11.9	30	108	278	416	-
38	82s	380	252	128	4.6	66	-	-	36	68.6	1.1	4.0	2630	12.6	64	149	274	487	-
55	80s	448	221	227	11.4	49	-	-	50	66.3	1.4	4.7	3320	11.3	18	64	160	242	2.9
Avg.	81s	415	224	191	8.5	54	-	-	44	67.5	1.3	4.4	3000	11.7	31	88	213	332	-
80s C-Comp.-Premium																			
13	80s	597	376	221	9.3	63	18350	36.2	42	69.0	1.2	3.4	3710	10.7	11	30	88	129	2.8
84s C-Comp.																			
34	84s	388	218	170	8.5	56	21300	33.9	50	74.6	1.2	4.7	2970	12.1	55	92	156	303	2.5



**Table B (contd...)**

Mill ref. no.	Actual count	Yarn selling price (Rs/kg)	Raw material cost (Rs/kg of yarn)	Net out-put value				Avg. spl. speed (rpm)	TPI	Prodn./spl. /8 hrs. (g)	Yarn realisation (%)	Yarn quality							
				Rs/kg of yarn*	Rs/spl. /8 hrs.**	RMC as % of YSP	Count CV%					Strength CV%	CSP@	U%	Imperfections/1000 m				Hairiness index
															Thin	Thick	Neps	Total	
90s C-Comp.																			
30	91s	411	212	199	7.4	52	18500	38.2	37	67.1	1.3	4.1	2920	12.2	49	105	237	391	2.7
46	90s	475	257	218	7.6	54	-	-	35	56.0	1.2	4.7	2980	12.4	57	145	260	462	-
Avg.	90s	443	235	208	7.5	53	-	-	36	61.6	1.3	4.4	2950	12.3	53	125	249	427	-
92s C-Comp.																			
30	93s	422	212	210	7.4	50	18200	39.1	35	67.1	1.3	3.8	2920	12.2	51	107	272	430	2.7
38	94s	400	222	178	5.0	56	-	-	28	68.6	1.5	5.0	2450	13.7	192	232	496	920	-
38	93s	412	252	160	4.6	61	-	-	29	68.6	1.7	4.7	2650	12.6	76	145	584	805	-
Avg.	93s	411	229	182	5.7	56	-	-	31	68.1	1.5	4.5	2670	12.8	106	161	451	718	-
94s C-Comp.																			
31	94s	500	200	300	9.6	40	17500	40.4	32	71.8	1.4	4.8	2880	12.0	65	78	228	371	2.5
95s C-Comp.																			
30	96s	425	212	213	6.8	50	17500	39.1	32	67.1	1.3	3.8	2830	12.1	44	95	244	383	2.6
46	94s	483	257	226	6.6	53	-	-	29	56.0	1.0	5.2	3520	10.6	10	70	173	253	-
Avg.	95s	454	235	219	6.7	52	-	-	31	61.6	1.1	4.5	3180	11.4	27	83	209	319	-
100s C-Comp.																			
20	100s	540	250	290	9.0	46	-	-	31	68.5	1.4	4.7	3360	12.2	45	139	308	492	-
20	100s	510	215	295	9.4	42	-	-	32	67.3	1.5	4.7	2840	12.7	58	140	336	534	-
46	100s	463	257	206	5.8	56	-	-	28	56.0	1.4	5.4	2840	12.8	85	227	372	684	-

**Table B (contd...)**

Mill ref. no.	Actual count	Yarn selling price (Rs/kg)	Raw material cost (Rs/kg of yarn)	Net out-put value				Yarn quality												
				Rs/kg of yarn *	Rs/spl. /8 hrs.**	RMC as % of YSP	Avg. spl. speed (rpm)	Prodn./spl. /8 hrs. (g)	Yarn realisation (%)	Count CV%	Strength CV%	CSP@	U%	Imperfections/1000 m				Hairiness index		
														Thin	Thick	Neps	Total			
100s C-Comp. (contd...)																				
55	100s	548	226	322	11.6	41	-	-	36	65.0	1.4	4.5	3330	12.1	50	97	194	341	2.7	
56	100s	480	231	249	8.0	48	-	-	32	70.0	-	-	-	-	-	-	-	-	-	
Avg.	100s	508	236	272	8.8	47	-	-	32	65.4	1.4	4.8	3090	12.5	60	151	303	514	-	
100s C-Comp.-Premium																				
13	100s	641	362	279	9.2	56	18850	38.7	33	73.0	1.2	3.9	3690	11.3	32	46	111	189	2.5	
29	100s	980	411	569	17.1	42	19200	41.5	30	67.0	1.4	5.0	3620	11.6	26	88	207	321	2.0	
31	101s	741	443	298	9.8	60	19000	39.5	33	77.5	1.6	4.8	3720	11.7	40	50	110	200	2.3	
Avg.	100s	787	405	382	12.0	53	19017	39.9	32	72.5	1.4	4.6	3680	11.5	33	61	143	237	2.3	
105s C-Comp.																				
19	105s	515	226	289	7.2	44	-	-	25	61.2	1.5	4.8	2620	13.5	165	275	552	992	2.7	
20	105s	511	215	296	8.0	42	-	-	27	67.3	1.4	4.8	2850	12.9	92	220	456	768	-	
29	105s	513	280	233	5.8	55	17500	43.5	25	67.0	1.4	4.1	2660	13.4	95	230	354	679	2.2	
38	106s	470	252	218	4.8	54	-	-	22	68.6	1.5	5.1	2530	13.2	136	246	572	954	-	
46	105s	505	257	248	6.7	51	-	-	27	56.0	1.5	5.8	2810	12.8	98	254	385	737	-	
52	105s	500	237	263	6.6	47	16300	41.5	25	67.0	2.0	-	2760	12.9	158	188	390	736	2.6	
Avg.	105s	502	245	257	6.5	49	-	-	25	64.5	1.6	4.9	2710	13.1	124	236	452	812	-	
106s C-Comp.																				
14	106s	490	213	277	8.6	43	18270	38.5	31	70.3	-	-	-	-	-	-	-	-	-	

**Table B (contd...)**

Mill ref. no.	Actual count	Yarn selling price (Rs/kg)	Raw material cost (Rs/kg of yarn)	Net out-put value		RMC as % of YSP	Avg. spl. speed (rpm)	TPI	Prodn./spl. /8 hrs. (g)	Yarn realisation (%)	Yarn quality								
				Rs/kg of yarn*	Rs/spl. /8 hrs.**						Count CV%	Strength CV%	CSP@	U%	Imperfections/1000 m				Hairiness index
															Thin	Thick	Neps	Total	
120s C-Comp.																			
14	121s	608	248	360	9.0	41	18190	42.4	25	69.3	-	-	-	-	-	-	-	-	-
20	120s	620	231	389	8.6	37	-	-	22	69.0	1.4	4.7	2870	12.9	96	190	385	671	-
<i>Avg.</i>	<i>121s</i>	<i>614</i>	<i>240</i>	<i>374</i>	<i>8.8</i>	<i>39</i>	-	-	<i>24</i>	<i>69.2</i>	-	-	-	-	-	-	-	-	-
120s C-Comp.-Premium																			
13	120s	917	545	372	7.8	59	17980	46.5	21	76.0	1.1	3.6	3940	11.9	54	62	132	248	1.9
80s C-Comp.-Org.																			
6	81s	485	275	210	9.9	57	-	-	47	67.0	-	-	-	-	-	-	-	-	-
60s C-Comp.-Slub																			
39	61s	397	193	204	11.8	49	-	36.5	58	69.4	1.3	4.3	2740	-	-	-	-	-	-
42s C-Comp.-HT																			
44	42s	355	204	151	7.7	57	-	-	51	71.4	1.3	4.9	2720	10.1	1	34	102	137	3.4
60s C-Comp.-HT																			
39	61s	447	193	254	11.2	43	-	48.7	44	69.4	1.4	4.0	2940	11.1	14	48	91	153	-
Hank yarn																			
60s C-Comp.-DHPR																			
52	60s	369	234	135	8.8	63	17250	30.1	65	67.0	1.9	4.7	2810	11.6	24	74	106	204	3.4

**Table B (contd...)**

Mill ref. no.	Actual count	Yarn selling price (Rs/kg)	Raw material cost (Rs/kg of yarn)	Net out-put value		RMC as % of YSP	Avg. spl. speed (rpm)	TPI	Prodn./spl. /8 hrs. (g)	Yarn realisation (%)	Yarn quality									
				Rs/kg of yarn*	Rs/spl. /8 hrs.**						Count CV%	Strength CV%	CSP@	U%	Imperfections/1000 m			Hairiness index		
															Thin	Thick	Neps		Total	
14	-	586	213	373	12.3	36	18010	37.5	33	70.3	-	-	-	-	-	-	-	-	-	-
2/100s C-Comp.-DHPR																				
14	-	737	248	489	14.2	34	18480	37.5	29	69.3	-	-	-	-	-	-	-	-	-	-
52	60s	644	273	371	6.7	42	17000	44.5	18	67.0	1.5	5.5	3100	10.0	3	33	122	158	4.0	-
Avg.	-	691	261	430	10.5	38	17740	41.0	24	68.2	-	-	-	-	-	-	-	-	-	-
60s C-Comp.-DHCR																				
14	60s	360	195	165	13.7	54	20690	28.6	83	70.8	-	-	-	-	-	-	-	-	-	-
80s C-Comp.-DHCR																				
14	80s	452	213	239	12.0	47	19840	34.7	50	70.3	-	-	-	-	-	-	-	-	-	-
52	80s	496	234	262	10.0	47	18200	34.8	38	67.0	2.0	6.0	2490	13.0	139	199	280	618	3.0	-
Avg.	80s	474	224	250	11.0	47	19020	34.8	44	68.7	-	-	-	-	-	-	-	-	-	-
82s C-Comp.-DHCR																				
46	80s	540	200	340	15.0	37	-	-	44	66.3	1.4	5.3	2800	12.1	48	144	273	465	-	-
30s C-Comp.-Ex.																				
40	30s	270	189	81	19.4	70	22550	20.8	240	73.0	1.0	3.1	3150	8.7	0	9	31	40	4.8	-

**Table B (contd...)**

Mill ref. no.	Actual count	Yarn selling price (Rs/kg)	Raw material cost (Rs/kg of yarn)	Net out-put value			RMC as % of YSP	Avg. spl. speed (rpm)	TPI	Prodn./spl. /8 hrs. (g)	Yarn realisation (%)	Yarn quality							
				Rs/kg of yarn*	Rs/spl. /8 hrs.**	Count CV%						Strength CV%	CSP@	U%	Imperfections/1000 m				Hairiness index
															Thin	Thick	Neps	Total	
Hosiery yarn																			
									16s CH										
27	16s	260	216	44	17.4	83	12700	14.4	395	68.3	-	-	-	-	-	-	-	-	-
									20s CH										
27	20s	264	216	48	14.9	82	14800	16.1	310	68.3	1.2	-	-	8.6	0	12	15	27	7.7
									24s CH										
27	24s	268	216	52	13.2	81	16250	19.1	253	68.3	1.2	-	-	9.0	0	14	20	34	7.4
43	24s	254	209	45	10.9	82	-	-	243	70.5	1.0	3.6	2270	9.2	0	18	29	47	7.7
Avg.	24s	261	213	48	12.1	82	-	-	248	69.4	1.1	-	-	9.1	0	16	25	41	7.6
									26s CH										
26	26s	236	191	45	10.8	81	16400	17.9	240	69.6	1.2	4.4	2630	9.3	0	21	40	61	8.6
27	26s	269	216	53	12.2	80	-	-	230	68.3	-	-	-	-	-	-	-	-	-
43	26s	260	209	51	11.8	80	-	-	231	70.5	1.0	3.8	2500	9.2	0	17	23	40	7.5
Avg.	26s	255	205	50	11.6	80	-	-	234	69.5	1.1	4.1	2570	9.3	0	19	32	51	8.1
									30s CH										
27	30s	273	216	57	11.1	79	-	-	195	68.3	1.3	-	-	9.8	0	22	50	72	6.7
35	30s	258	209	49	10.7	81	-	-	218	73.0	-	-	-	-	-	-	-	-	-
43	30s	264	209	55	11.2	79	-	-	204	70.5	1.0	3.4	2520	9.7	0	17	44	61	7.3
58	29s	275	204	71	14.0	74	-	-	197	75.3	1.4	5.0	2250	9.9	0	77	85	162	6.6
Avg.	30s	268	210	58	11.8	78	-	-	204	71.8	1.2	-	-	9.8	0	39	60	99	6.9

**Table B (contd...)**

Mill ref. no.	Actual count	Yarn selling price (Rs/kg)	Raw material cost (Rs/kg of yarn)	Net out-put value		RMC as % of YSP	Avg. spl. speed (rpm)	TPI	Prodn./spl. /8 hrs. (g)	Yarn realisation (%)	Yarn quality								
				Rs/kg of yarn*	Rs/spl. /8 hrs.**						Count CV%	Strength CV%	CSP@	U%	Imperfections/1000 m			Hairiness index	
															Thin	Thick	Neps		Total
32s CH																			
27	32s	278	216	62	11.2	78	-	-	180	68.3	-	-	-	-	-	-	-	-	-
35	32s	250	206	44	8.8	82	-	-	199	74.3	-	-	-	-	-	-	-	-	-
Avg.	32s	264	211	53	10.0	80	-	-	190	71.3	-	-	-	-	-	-	-	-	-
34s CH																			
57	33s	279	195	84	11.5	70	-	-	137	71.4	1.4	-	2370	10.3	1	79	217	297	7.3
36s CH																			
57	36s	282	195	87	9.9	69	-	-	114	71.4	1.5	5.9	2430	10.8	3	105	262	370	6.7
50s CH																			
32	49s	322	200	122	10.1	62	-	-	83	70.6	1.3	4.5	2480	10.7	3	48	88	139	5.5
2/80s CH-ET-M																			
13	40s	644	306	338	32.1	48	11780	20.9	95	65.0	1.2	3.4	4290	8.7	2	73	195	270	4.2
2/125s CH-ET-G-M																			
13	62s	1235	569	666	32.0	46	11960	27.3	48	68.0	1.2	3.9	4850	10.4	8	101	268	377	2.4
20s CH-Comp.																			
28	19s	257	189	68	22.4	74	14000	14.5	329	74.0	1.2	3.5	2890	8.1	0	6	23	29	-

**Table B (contd...)**

Mill ref. no.	Actual count	Yarn selling price (Rs/kg)	Raw material cost (Rs/kg of yarn)	Net out-put value				Yarn quality											
				Rs/kg of yarn *	Rs/spl. /8 hrs.**	RMC as % of YSP	Avg. spl. speed (rpm)	TPI	Prodn./spl. /8 hrs. (g)	Yarn realisation (%)	Count CV%	Strength CV%	CSP@	U%	Imperfections/1000 m				Hairiness index
															Thin	Thick	Neps	Total	
25s CH-Comp.																			
22	25s	262	216	46	12.9	82	18300	16.5	281	73.1	1.0	4.9	2940	9.1	0	14	23	37	5.7
28	24s	265	189	76	21.7	71	16500	16.1	285	74.0	1.2	3.3	2940	8.4	0	12	40	52	-
51	25s	263	208	55	13.4	79	-	-	243	72.4	1.4	3.6	2860	8.4	0	5	26	31	-
58	24s	262	204	58	14.8	78	-	-	256	75.3	1.3	4.2	2400	9.3	0	59	48	107	7.5
Avg.	24s	263	204	59	15.7	78	-	-	266	73.7	1.2	4.0	2790	8.8	0	23	34	57	-
26s CH-Comp.																			
22	26s	268	216	52	13.9	81	19000	17.0	267	73.1	1.0	-	3120	8.6	0	10	25	35	5.2
30s CH-Comp.																			
10	30s	245	182	63	15.0	74	-	-	238	71.0	1.0	3.4	3040	9.1	0	17	49	66	5.3
22	30s	277	216	61	13.3	78	19000	18.4	218	73.1	1.1	-	3140	9.1	0	21	51	72	4.7
26	30s	257	189	68	15.3	74	19100	18.6	225	69.8	1.1	4.4	2630	9.3	0	21	40	61	4.9
26	30s	255	189	66	13.5	74	21000	22.5	205	69.8	1.2	3.7	3070	9.3	0	18	45	63	4.7
28	29s	286	196	90	21.3	69	18500	17.9	237	69.5	1.0	4.9	2950	8.7	0	9	27	36	-
28	29s	275	189	86	21.0	69	19300	17.9	244	74.0	1.1	3.4	2880	9.0	0	19	93	112	-
43	30s	243	209	34	6.8	86	-	-	199	70.5	1.0	3.5	2920	9.5	0	16	43	59	5.4
51	30s	274	208	66	12.5	76	-	-	190	72.4	1.5	4.6	2810	9.2	0	12	58	70	-
57	31s	272	195	77	12.6	72	-	-	163	71.4	1.7	-	2910	9.6	0	35	95	130	5.7
58	29s	275	204	71	14.9	74	-	-	210	75.3	1.3	-	2650	9.5	0	67	70	137	5.2
Avg.	30s	266	198	68	14.6	75	-	-	213	71.7	1.2	4.0	2900	9.2	0	24	57	81	5.1

**Table B (contd...)**

Mill ref. no.	Actual count	Yarn selling price (Rs/kg)	Raw material cost (Rs/kg of yarn)	Net out-put value				Avg. spl. speed (rpm)	TPI	Prodn./spl. /8 hrs. (g)	Yarn realisation (%)	Yarn quality							
				Rs/kg of yarn*	Rs/spl. /8 hrs.**	RMC as % of YSP	Count CV%					Strength CV%	CSP@	U%	Imperfections/1000 m				Hairiness index
															Thin	Thick	Neps	Total	
30s CH-Comp.-Recycled																			
28	29s	271	189	82	20.0	70	19300	17.9	244	74.0	1.1	-	2880	8.9	0	13	86	99	-
32s CH-Comp.																			
10	32s	264	186	78	16.7	70	-	-	214	71.0	1.0	3.2	2990	9.1	0	18	56	74	5.1
34s CH-Comp.																			
10	34s	275	186	89	17.6	68	-	-	198	71.5	1.0	4.1	3090	9.2	0	14	50	64	4.9
22	34s	278	216	62	11.0	78	19800	19.8	178	73.1	1.0	-	3060	9.5	0	27	96	123	4.8
28	33s	279	189	90	18.5	68	19500	19.1	205	74.0	1.3	3.9	2810	9.3	0	25	101	126	-
51	34s	279	208	71	11.5	75	-	-	162	72.4	1.4	4.8	2710	9.5	0	19	69	88	-
57	33s	284	195	89	14.2	69	-	-	160	71.4	1.5	-	2670	9.3	0	17	68	85	5.0
Avg.	33s	279	199	80	14.6	72	-	-	181	72.5	1.2	4.3	2870	9.4	0	20	77	97	4.9
36s CH-Comp.																			
10	36s	273	186	87	16.3	68	-	-	187	69.8	1.0	3.9	3070	9.4	0	21	58	79	4.7
28	36s	305	196	109	19.0	64	18500	19.5	174	69.5	1.0	3.6	2890	9.1	0	13	45	58	-
61	36s	285	195	90	18.1	68	-	-	201	71.7	1.3	4.4	3160	9.3	0	9	19	28	4.7
Avg.	36s	288	192	96	17.8	67	-	-	187	70.3	1.1	4.0	3040	9.3	0	14	41	55	4.7
40s CH-Comp.																			
10	40s	276	186	90	14.2	67	-	-	158	68.8	1.1	3.5	3080	9.8	1	25	77	103	4.3
22	40s	298	216	82	11.4	72	20000	22.7	139	73.1	1.1	3.9	2920	10.0	1	41	151	193	4.3
51	39s	285	208	77	10.9	73	-	-	141	72.4	1.4	4.1	2760	9.6	0	23	75	98	-



**Table B (contd...)**

Mill ref. no.	Actual count	Yarn selling price (Rs/kg)	Raw material cost (Rs/kg of yarn)	Net out-put value				Yarn quality											
				Rs/kg of yarn *	Rs/spl. /8 hrs.**	RMC as % of YSP	Avg. spl. speed (rpm)	TPI	Prodn./spl. /8 hrs. (g)	Yarn realisation (%)	Count CV%	Strength CV%	CSP@	U%	Imperfections/1000 m				Hairiness index
															Thin	Thick	Neps	Total	
40s CH-Comp. (contd...)																			
51	40s	291	208	83	11.5	71	-	-	138	72.4	1.5	4.6	2710	9.8	2	35	90	127	-
57	39s	292	195	97	11.3	67	-	-	116	71.4	1.7	-	2730	10.3	1	80	251	332	5.3
59	40s	273	193	80	12.2	71	-	-	153	72.0	1.0	3.5	3030	9.1	0	14	36	50	4.5
60	40s	295	196	99	17.1	66	-	-	173	72.5	1.4	4.8	3010	9.5	1	16	35	52	5.0
<i>Avg.</i>	<i>40s</i>	<i>287</i>	<i>200</i>	<i>87</i>	<i>12.7</i>	<i>70</i>	<i>-</i>	<i>-</i>	<i>145</i>	<i>71.8</i>	<i>1.3</i>	<i>4.1</i>	<i>2890</i>	<i>9.7</i>	<i>1</i>	<i>33</i>	<i>102</i>	<i>136</i>	<i>4.7</i>
42s CH-Comp.																			
10	42s	281	186	95	14.2	66	-	-	149	69.8	1.2	4.0	3020	10.1	1	30	89	120	4.2
28	41s	312	189	123	18.0	61	19000	21.3	146	74.0	1.1	3.4	2730	9.8	0	30	136	166	-
<i>Avg.</i>	<i>41s</i>	<i>297</i>	<i>188</i>	<i>109</i>	<i>16.1</i>	<i>64</i>	<i>-</i>	<i>-</i>	<i>148</i>	<i>71.9</i>	<i>1.2</i>	<i>3.7</i>	<i>2880</i>	<i>10.0</i>	<i>1</i>	<i>30</i>	<i>113</i>	<i>144</i>	<i>-</i>
45s CH-Comp.																			
22	45s	316	216	100	10.7	68	17800	23.4	107	73.1	1.4	3.0	2810	10.8	2	62	146	210	4.7
50s CH-Comp.																			
48	50s	295	212	83	9.2	72	20000	24.5	111	69.5	1.4	4.3	2790	10.8	4	84	263	351	-
60s CH-Comp.																			
32	60s	480	205	275	22.0	43	-	-	80	68.6	1.2	4.5	2900	10.5	6	33	88	127	3.9
48	60s	311	212	99	8.1	68	20000	27.3	82	69.5	1.2	4.1	2730	11.1	7	82	206	295	-
<i>Avg.</i>	<i>60s</i>	<i>396</i>	<i>209</i>	<i>187</i>	<i>15.1</i>	<i>56</i>	<i>-</i>	<i>-</i>	<i>81</i>	<i>69.1</i>	<i>1.2</i>	<i>4.3</i>	<i>2820</i>	<i>10.8</i>	<i>7</i>	<i>58</i>	<i>147</i>	<i>212</i>	<i>-</i>

**Table B (contd...)**

Mill ref. no.	Actual count	Yarn selling price (Rs/kg)	Raw material cost (Rs/kg of yarn)	Net out-put value		RMC as % of YSP	Avg. spl. speed (rpm)	TPI	Prodn./spl. /8 hrs. (g)	Yarn realisation (%)	Yarn quality								
				Rs/kg of yarn *	Rs/spl. /8 hrs. **						Count CV%	Strength CV%	CSP@	U%	Imperfections/1000 m				Hairiness index
															Thin	Thick	Neps	Total	
28	24s	280	205	75	21.4	73	16500	16.1	285	74.0	1.1	-	2940	8.4	0	10	39	49	-
<i>25s CH-Comp.-Org.</i>																			
10	30s	291	208	83	19.8	71	-	-	238	71.0	1.0	3.0	3060	9.0	0	15	43	58	5.2
<i>30s CH-Comp.-Org.</i>																			
<i>Export market</i>																			
<i>2/40s C-Ex.</i>																			
52	20s	330	221	109	11.9	67	18630	24.5	109	67.0	1.5	3.6	3070	7.7	0	9	19	28	7.9
<i>24s C-Comp.-Ex.</i>																			
40	24s	220	189	31	9.4	86	20570	18.6	302	73.0	1.0	3.0	3300	8.3	0	7	10	17	5.3
<i>60s C-Comp.-Ex.</i>																			
56	60s	323	189	134	10.3	59	-	-	77	70.0	-	-	-	-	-	-	-	-	-
<i>60s C-Comp.-Ex.-Premium</i>																			
2	60s	513	350	163	11.1	68	20100	33.1	68	70.2	1.4	4.2	3960	9.6	1	10	26	37	3.0
<i>80s C-Comp.-Ex.</i>																			
34	80s	378	218	160	9.0	58	21400	32.3	56	74.6	1.2	4.9	2980	12.0	50	91	155	296	2.6
56	80s	401	204	197	9.3	51	-	-	47	70.0	-	-	-	-	-	-	-	-	-
<i>Avg.</i>	<i>80s</i>	<i>390</i>	<i>211</i>	<i>179</i>	<i>9.2</i>	<i>55</i>	<i>-</i>	<i>-</i>	<i>52</i>	<i>72.3</i>	<i>-</i>	<i>-</i>	<i>-</i>	<i>-</i>	<i>-</i>	<i>-</i>	<i>-</i>	<i>-</i>	<i>-</i>

**Table B (contd...)**

Mill ref. no.	Actual count	Yarn selling price (Rs/kg)	Raw material cost (Rs/kg of yarn)	Net out-put value				Yarn quality											
				Rs/kg of yarn *	Rs/spl. /8 hrs.**	RMC as % of YSP	Avg. spl. speed (rpm)	TPI	Prodn./spl. /8 hrs. (g)	Yarn realisation (%)	Count CV%	Strength CV%	CSP@	U%	Imperfections/1000 m				Hairiness index
															Thin	Thick	Neps	Total	
50s C-Comp.-Cheese-Ex.																			
32	50s	353	205	148	13.9	58	-	-	94	68.6	1.4	3.5	3010	10.2	3	21	49	73	3.9
Hosiery yarn																			
24s CH-Ex.																			
26	24s	241	190	51	14.1	79	16700	17.3	276	69.1	1.5	4.8	2640	9.0	0	19	29	48	7.9
20s CH-Comp.-Ex.																			
26	20s	218	189	29	10.6	87	16400	14.6	364	69.8	1.1	4.7	2820	8.5	0	8	8	16	6.3
24s CH-Comp.-Ex.																			
40	24s	243	189	54	17.5	78	19400	16.4	324	73.0	1.0	3.7	3080	8.3	0	8	12	20	5.9
30s CH-Comp.-Ex.																			
10	30s	246	182	64	15.2	74	-	-	238	71.0	1.0	3.6	3050	9.0	0	16	45	61	5.3
40	30s	254	189	65	17.0	74	22100	18.9	261	73.0	1.0	3.7	3090	8.7	0	8	28	36	5.1
Avg.	30s	250	186	64	16.1	74	-	-	250	72.0	1.0	3.6	3070	8.9	0	12	37	49	5.2
32s CH-Comp.-Ex.																			
40	32s	262	189	73	17.4	72	22150	20.8	238	73.0	1.0	3.5	3110	8.9	0	11	33	44	4.9
53	32s	285	212	73	13.7	74	-	-	187	70.0	1.1	3.9	3070	9.6	0	9	42	51	3.9
Avg.	32s	274	201	73	15.6	73	-	-	213	71.5	1.0	3.7	3090	9.3	0	10	38	48	4.4

**Table B (contd...)**

Mill ref. no.	Actual count	Yarn selling price (Rs/kg)	Raw material cost (Rs/kg of yarn)	Net out-put value		RMC as % of YSP	Avg. spl. speed (rpm)	TPI	Prodn./spl. /8 hrs. (g)	Yarn realisation (%)	Yarn quality								
				Rs/kg of yarn*	Rs/spl. /8 hrs.**						Count CV%	Strength CV%	CSP@	U%	Imperfections/1000 m				Hairiness index
															Thin	Thick	Neps	Total	
34s CH-Comp.-Ex.																			
53	34s	290	210	80	13.5	72	-	-	169	71.0	1.1	3.9	3070	9.6	0	9	42	51	3.9
40s CH-Comp.-Ex.																			
10	40s	270	186	84	13.3	69	-	-	158	69.8	1.1	3.9	3010	9.7	1	24	73	98	4.4
35	40s	272	209	63	9.6	77	-	-	152	72.8	-	-	-	-	-	-	-	-	-
40	40s	284	189	95	16.6	67	22500	21.8	175	73.0	1.0	3.4	3000	9.3	0	15	52	67	4.5
53	40s	300	210	90	12.4	70	-	-	138	71.0	1.2	4.3	3010	10.5	0	32	118	150	3.1
Avg.	40s	282	199	83	13.0	71	-	-	156	71.7	1.1	3.9	3010	9.8	0	24	81	105	4.0
50s CH-Comp.-Ex.																			
2	50s	678	498	180	19.1	73	17700	22.8	106	73.0	1.5	5.6	3950	9.7	1	10	29	40	4.0
60s CH-Comp.-Ex.																			
2	60s	447	251	196	15.3	56	19600	28.4	78	69.0	1.5	-	2950	10.4	5	21	57	83	3.5
80s CH-Comp.-Ex.																			
2	80s	976	405	571	29.7	41	18800	31.6	52	69.6	1.4	6.0	3400	11.2	16	44	103	163	3.0
2/60s CH-Comp.-Org.-G-Ex.																			
13	-	1117	661	456	31.5	59	17590	28.8	69	55.0	1.3	3.9	3090	7.8	0	1	3	4	3.0

**Table B (contd...)**

Mill ref. no.	Actual count	Yarn selling price (Rs/ kg)	Raw material cost (Rs/kg of yarn)	Net out-put value				Yarn quality											
				Rs/kg		RMC as % of YSP	Avg. spl. speed (rpm)	Prodn./ spl. /8 hrs. (g)	Yarn reali- sation (%)	Count CV%	Strength CV%	CSP@	U%	Imperfections/1000 m			Hairi- ness index		
				of yarn*	Rs/ spl. /8 hrs.**									Thin	Thick	Neps		Total	
<b>Polyester/cotton blended yarn</b>																			
<i>Domestic market</i>																			
<i>Carded yarn</i>																			
52s P/C-K (70:30)																			
36	53s	227	140	87	7.2	62	-	-	83	93.9	1.3	4.3	4070	11.7	6	154	483	643	5.1
55s P/C-K (70:30)																			
9	56s	185	126	59	5.1	68	-	22.8	86	93.4	2.1	4.2	4160	13.8	70	599	1017	1686	4.3
62s P/C-K (70:30)																			
29	62s	276	157	119	5.7	57	15800	37.8	48	90.3	1.3	5.8	3600	13.5	35	382	670	1087	3.6
36	63s	231	140	91	5.9	61	-	-	65	93.9	1.4	4.6	3980	12.8	24	254	562	840	4.7
<i>Avg.</i>	<i>62s</i>	<i>254</i>	<i>149</i>	<i>105</i>	<i>5.8</i>	<i>59</i>	-	-	<i>57</i>	<i>92.1</i>	<i>1.3</i>	<i>5.2</i>	<i>3790</i>	<i>13.2</i>	<i>30</i>	<i>318</i>	<i>616</i>	<i>964</i>	<i>4.2</i>
2/40s P/C-K (70:30)																			
17	20s	285	151	134	17.7	53	-	-	132	93.2	1.0	-	4170	9.3	1	26	124	151	-
41	19s	285	156	129	17.0	55	18500	23.7	132	90.0	1.2	-	3860	8.8	0	15	78	93	-
<i>Avg.</i>	<i>20s</i>	<i>285</i>	<i>154</i>	<i>131</i>	<i>17.4</i>	<i>54</i>	-	-	<i>132</i>	<i>91.6</i>	<i>1.1</i>	-	<i>4020</i>	<i>9.1</i>	<i>1</i>	<i>21</i>	<i>101</i>	<i>123</i>	-

**Table B (contd...)**

Mill ref. no.	Actual count	Yarn selling price (Rs/kg)	Raw material cost (Rs/kg of yarn)	Net out-put value		RMC as % of YSP	Avg. spl. speed (rpm)	TPI	Prodn./ spl. /8 hrs. (g)	Yarn reali-sation (%)	Yarn quality								
				Rs/kg of yarn*	Rs/spl. /8 hrs.**						Count CV%	Strength CV%	CSP@	U%	Imperfections/1000 m			Hairi-ness index	
															Thin	Thick	Neps		Total
62	40s	203	137	66	9.6	67	-	-	146	93.0	1.2	3.7	3890	12.1	14	201	368	583	5.0
40s P/C-K (65:35)																			
11	-	285	146	139	18.8	51	18580	23.9	135	94.2	1.0	-	3980	9.1	0	24	48	72	-
2/40s P/C-K (65:35)																			
53	42s	223	160	63	8.1	72	-	-	129	87.0	1.5	4.4	3060	12.0	7	209	612	828	4.5
42s P/C-K-Comp. (40:60)																			
55	23s	200	148	52	15.1	74	-	-	290	89.0	1.3	5.0	2840	11.8	3	188	196	387	4.9
24s P/C-KH (40:60)																			
55	29s	205	148	57	12.5	72	-	-	220	89.0	1.3	4.5	2650	12.7	11	327	346	684	5.8
30s P/C-KH (40:60)																			
Combed yarn																			
9	20s	213	158	55	15.2	74	-	16.5	276	85.6	1.6	4.1	4210	9.8	0	60	95	155	6.3
20s P/C-SC (65:35)																			
29	30s	291	151	140	9.7	52	15800	25.2	69	76.2	1.3	5.9	4490	9.3	0	15	25	40	5.6
2/60s P/C-C (67:33)																			

**Table B (contd...)**

Mill ref. no.	Actual count	Yarn selling price (Rs/kg)	Raw material cost (Rs/kg of yarn)	Net out-put value		RMC as % of YSP	Avg. spl. speed (rpm)	Prodn./ spl. /8 hrs. (g)	Yarn reali- sation (%)	Yarn quality									
				Rs/kg of yarn *	Rs/ spl. /8 hrs. **					Count CV%	Strength CV%	CSP@	U%	Imperfections/1000 m			Hairi- ness index		
														Thin	Thick	Neps		Total	
50	30s	197	154	43	8.1	78	15550	30s P/C-C (65:35) 18.7	188	82.5	1.9	4.5	4030	10.6	2	56	118	176	7.8
50	40s	208	154	54	6.8	74	15750	40s P/C-C (65:35) 21.5	125	82.5	2.0	5.3	3730	11.9	8	161	263	432	7.4
50	46s	217	154	63	6.5	71	15750	45s P/C-C (65:35) 23.3	103	82.5	2.2	-	3600	12.6	24	252	353	629	6.9
36	80s	314	158	156	6.9	50	-	80s P/C-C (65:35) -	44	78.4	1.5	4.8	3320	12.4	38	140	271	449	3.9
50	30s	290	156	134	9.1	54	15520	2/60s P/C-C (65:35) 26.3	68	82.5	1.8	3.8	4780	9.2	0	18	41	59	6.1
29	40s	320	179	141	6.8	56	17000	2/80s P/C-C (65:35) 28.7	48	76.2	1.3	4.4	4400	10.0	0	30	54	84	5.1
50	40s	329	156	173	7.6	47	15620	30.8	44	82.5	1.9	4.4	4350	10.7	1	46	95	142	7.0
<i>Avg.</i>	<i>40s</i>	<i>325</i>	<i>168</i>	<i>157</i>	<i>7.2</i>	<i>52</i>	<i>16310</i>	<i>29.8</i>	<i>46</i>	<i>79.4</i>	<i>1.6</i>	<i>4.4</i>	<i>4380</i>	<i>10.4</i>	<i>1</i>	<i>38</i>	<i>75</i>	<i>114</i>	<i>6.1</i>
50	41s	260	191	69	7.8	73	15820	40s P/C-C (40:60) 23.3	113	78.0	1.5	4.4	3340	11.2	5	79	136	220	5.2

**Table B (contd...)**

Mill ref. no.	Actual count	Yarn selling price (Rs/kg)	Raw material cost (Rs/kg of yarn)	Net out-put value			RMC as % of YSP	Avg. spl. speed (rpm)	TPI	Prodn./spl. /8 hrs. (g)	Yarn realisation (%)	Yarn quality							
				Rs/kg of yarn*	Rs/spl. /8 hrs.**	Count CV%						Strength CV%	CSP@	U%	Imperfections/1000 m				Hairiness index
															Thin	Thick	Neps	Total	
62s P/C-C-HT (65:35)																			
36	63s	288	152	136	6.0	53	-	-	44	85.4	1.6	4.4	3250	12.6	27	198	422	647	3.6
40s P/C-C-Comp. (65:35)																			
62	40s	216	143	73	11.3	66	-	-	155	89.2	1.2	3.3	4190	9.8	0	21	81	102	4.4
45s P/C-C-Comp. (65:35)																			
53	45s	220	148	72	9.4	67	-	-	130	82.0	1.5	4.1	3990	11.4	6	75	179	260	3.3
62	45s	233	143	90	11.7	61	-	-	130	89.2	1.1	3.3	4110	10.1	1	28	94	123	4.2
Avg.	45s	227	146	81	10.6	64	-	-	130	85.6	1.3	3.7	4050	10.8	4	52	137	193	3.8
60s P/C-C-Comp. (40:60)																			
50	61s	305	191	114	6.8	63	15860	30.1	60	78.0	1.7	5.9	3060	12.4	34	177	285	496	4.4
60s P/C-C-Comp.-recycled (40:60)																			
53	60s	310	179	131	9.8	58	-	-	75	78.0	1.4	4.3	3050	11.1	6	57	131	194	2.7
24s P/C-CH (48:52)																			
45	24s	204	134	70	18.4	66	-	-	263	78.0	1.0	3.8	2900	9.6	0	22	63	85	6.5
30s P/C-CH (48:52)																			
45	30s	211	134	77	16.1	64	-	-	209	78.0	1.2	3.9	2800	9.6	0	30	90	120	6.1





**Table B (contd...)**

Mill ref. no.	Actual count	Yarn selling price (Rs/kg)	Raw material cost (Rs/kg of yarn)	Net out-put value		RMC as % of YSP	Avg. spl. speed (rpm)	TPI	Prodn./spl. /8 hrs. (g)	Yarn reali-sation (%)	Yarn quality								
				Rs/kg of yarn*	Rs/spl. /8 hrs.**						Count CV%	Strength CV%	CSP@	U%	Imperfections/1000 m			Hairi-ness index	
															Thin	Thick	Neps		Total
<b>Polyester/viscose blended yarn</b>																			
<i>Domestic market</i>																			
20s P/V (65:35)																			
5	20s	156	116	40	13.9	74	-	-	347	97.9	1.5	5.1	5050	7.2	0	5	12	17	8.1
30s P/V (65:35)																			
5	30s	159	116	43	-	73	-	-	-	97.9	1.5	5.2	4620	8.9	1	12	40	53	6.6
40s P/V (65:35)																			
5	40s	167	116	51	7.9	69	-	-	155	97.9	1.5	5.3	4180	10.0	3	20	100	123	5.8
42s P/V (65:35)																			
5	42s	170	116	54	7.8	68	-	-	145	97.9	1.5	5.5	4100	10.2	5	25	125	155	5.5
45s P/V (65:35)																			
5	45s	179	116	63	7.9	65	-	-	125	97.9	1.5	5.3	4070	10.7	8	35	140	183	5.1

**Table B (contd...)**

Mill ref. no.	Actual count	Yarn selling price (Rs/kg)	Raw material cost (Rs/kg of yarn)	Net out-put value		RMC as % of YSP	Avg. spl. speed (rpm)	TPI	Prodn./spl. /8 hrs. (g)	Yarn realisation (%)	Yarn quality								
				Rs/kg of yarn*	Rs/spl. /8 hrs.**						Count CV%	Strength CV%	CSP@	U%	Imperfections/1000 m			Hairiness index	
															Thin	Thick	Neps		Total
<b>100% polyester yarn</b>																			
<i>Domestic market</i>																			
40s P																			
9	40s	146	103	43	5.6	71	-	19.0	130	97.0	2.0	4.2	5330	10.2	3	34	53	90	5.3
45s P																			
9	45s	155	103	52	5.7	66	-	20.2	110	97.0	1.8	4.4	5090	10.9	5	50	72	127	4.9
50s P																			
9	50s	156	103	53	5.4	66	-	22.0	102	97.0	1.7	3.8	4930	11.3	10	57	76	143	4.6
65s P																			
9	66s	170	103	67	4.8	61	-	25.6	71	97.0	2.0	4.2	4840	12.0	26	79	130	235	4.2
<b>Cellulosic yarns</b>																			
80s Excel																			
20	80s	550	190	360	13.7	35	-	-	38	92.5	1.4	4.7	3490	12.9	57	285	468	810	-
60s Modal-Comp.																			
54	60s	343	209	134	8.2	61	-	-	61	94.3	-	-	-	-	-	-	-	-	-

**Table B (contd...)**

Mill ref. no.	Actual count	Yarn selling price (Rs/kg)	Raw material cost (Rs/kg of yarn)	Net out-put value				Avg. rotor speed (rpm)	TPI	Prodn./ rotor /8 hrs. (g)	Yarn reali-sation (%)	Yarn quality							
				Rs/kg of yarn*	Rs/ rotor /8 hrs.**	RMC as % of YSP	Count CV%					Strength CV%	CSP@	U%	Imperfections/1000 m			Hairi-ness index	
															Thin	Thick	Neps		Total
<b>Air-jet yarn</b>																			
30s AJ-V																			
62	30s	180	159	21	91.8	88	-	-	4372	92.5	-	3.1	2240	9.8	2	8	2	12	5.0
<b>Rotor yarn</b>																			
<i>Domestic market</i>																			
2s OE																			
8	2s	131	111	20	173.2	85	18000	6.9	8660	65.4	1.9	5.2	620	14.0	63	251	4	318	23.8
7s OE																			
13	7s	162	136	26	152.3	84	89170	15.4	5856	86.0	1.0	3.3	1870	10.5	1	22	119	142	8.7
16s OE																			
13	16s	178	136	42	96.7	76	121150	23.2	2303	86.0	1.2	3.6	1680	10.9	4	35	309	348	5.3
25	16s	159	137	22	38.6	86	-	-	1754	94.3	1.0	3.4	1810	11.3	4	98	131	233	4.9
59	16s	180	134	46	104.4	74	-	-	2270	87.5	1.0	3.7	1640	11.0	4	40	12	56	5.0
60	16s	169	146	23	46.4	86	-	-	2017	93.0	1.2	4.3	1750	10.6	2	23	23	48	5.5
<i>Avg.</i>	<i>16s</i>	<i>172</i>	<i>138</i>	<i>34</i>	<i>71.5</i>	<i>81</i>	<i>-</i>	<i>-</i>	<i>2086</i>	<i>90.2</i>	<i>1.1</i>	<i>3.8</i>	<i>1720</i>	<i>11.0</i>	<i>4</i>	<i>49</i>	<i>119</i>	<i>172</i>	<i>5.2</i>

**Table B (contd...)**

Mill ref. no.	Actual count	Yarn selling price (Rs/ kg)	Raw material cost (Rs/kg of yarn)	Net out-put value				Yarn quality											
				Rs/kg		RMC as % of YSP	Avg. rotor speed (rpm)	Prodn./ rotor /8 hrs. (g)	Yarn reali- sation (%)	Count CV%	Strength CV%	CSP@	U%	Imperfections/1000 m				Hairi- ness index	
				of yarn*	rotor /8 hrs.**									Thin	Thick	Neps	Total		
20s OE																			
13	20s	185	156	29	51.5	84	131270	26.1	1777	86.0	1.2	3.3	1630	11.6	13	70	540	623	5.3
25	20s	151	123	28	24.8	81	-	-	884	94.3	1.6	3.0	1340	11.1	0	29	133	162	6.2
48	20s	171	126	45	46.7	74	90000	29.5	1038	88.0	1.2	4.3	1390	11.3	4	53	85	142	-
59	20s	194	134	60	100.8	69	-	-	1680	87.5	1.0	4.2	1650	11.4	6	44	21	71	4.6
60	20s	179	146	33	46.0	82	-	-	1394	93.0	1.3	4.4	1670	10.8	4	28	28	60	5.4
<i>Avg.</i>	<i>20s</i>	<i>176</i>	<i>137</i>	<i>39</i>	<i>54.0</i>	<i>78</i>	-	-	<i>1355</i>	<i>89.8</i>	<i>1.3</i>	<i>3.9</i>	<i>1540</i>	<i>11.2</i>	<i>5</i>	<i>45</i>	<i>161</i>	<i>211</i>	<i>5.4</i>
10s OE-SHPR																			
52	10s	159	127	32	106.2	80	80000	16.4	3320	86.0	2.0	-	1420	12.2	13	65	29	107	8.2
2/20s OE-SHPR																			
52	10s	182	127	55	67.7	70	-	39.4	1230	86.0	2.5	6.0	1420	12.1	8	49	53	110	6.3

**Table B (contd...)**

Mill ref. no.	Actual count	Yarn selling price (Rs/kg)	Raw material cost (Rs/kg of yarn)	Net out-put value					Yarn quality									
				Rs/kg of yarn*	Rs/spl. /8 hrs.**	RMC as % of YSP	Avg. spl. speed (rpm)	TPI	Prodn./spl. /8 hrs. (g)	Yarn reali-sation (%)	Count CV%	Strength CV%	CSP@	U%	Imperfections/1000 m			Hairi-ness index
																Thin	Thick	Neps
<p><i>Note :</i></p> <p>'*' <i>Yarn selling price - raw material cost</i>  <i>(Yarn selling price - raw material cost) x prodn./spl.(or rotor)/8 hrs. (g)</i></p> <p>'**' <math display="block">\frac{\text{---}}{1000}</math></p> <p>'#' <i>Techno-commercial index</i> = <math display="block">\frac{\text{Mill's NOV (Rs/spl.shift)}}{\text{Survey avg. NOV (Rs/spl.shift)}} \times 100</math></p> <p>'+' <i>Performance of Commercial index</i> = <math display="block">\frac{\text{Mill's NOV (Rs/kg of yarn)}}{\text{Survey avg. NOV (Rs/kg of yarn)}} \times 100</math></p> <p>'++' <i>Performance of Technical index</i> = <math display="block">\frac{\text{Mill's prodn./spl./shift}}{\text{Survey avg. prodn./spl./shift}} \times 100</math></p> <p>'@' <i>Rounded-off to nearest 10</i></p> <p>'!' <i>Indicates data not provided/not applicable/unintelligible</i>  <i>Yarn selling price (YSP) = Ex-mill price; Raw material cost (RMC) = Clean material cost</i>  <i>Figures given inside the brackets indicate blend proportion</i></p>																		

**Table C** Mill-wise counts and varieties of yarns marketed by the participant mills

Mill ref. no.	Counts	State
1	20s K-Comp.	Telangana
2	60s C-Comp.-Ex.-Premium, 50s CH-Comp.-Ex., 60s CH-Comp.-Ex., 80s CH-Comp.-Ex.	Kerala
3	60s C-Comp.	Tamil Nadu
4	42s K	Maharashtra
5	20s P/V (65:35), 30s P/V (65:35), 40s P/V (65:35), 42s P/V (65:35), 45s P/V (65:35)	Maharashtra
6	80s C-Comp., 80s C-Comp.-Org.	Tamil Nadu
7	30s C-Comp.-Premium, 40s C-Comp.-Premium, 60s C-Comp.-Premium	Maharashtra
8	6s K-Slub, 8s K-Slub, 2s OE	Karnataka
9	55s P/C-K (70:30), 20s P/C-SC (65:35), 40s P, 45s P, 50s P, 65s P	Tamil Nadu
10	30s CH-Comp., 32s CH-Comp., 34s CH-Comp., 36s CH-Comp., 40s CH-Comp., 42s CH-Comp., 30s CH-Comp.-Org., 30s CH-Comp.-Ex., 40s CH-Comp.-Ex.	Maharashtra
11	2/40s P/C-K (65:35)	Tamil Nadu
12	40s SC, 52s SC-Comp., 54s C, 61s C, 60s C-Slub, 61s C-Comp., 80s C-Comp.	Karnataka
13	60s C-Comp.-Premium, 80s C-Comp.-Premium, 100s C-Comp.-Premium, 120s C-Comp.-Premium, 2/80s CH-ET-M, 2/125s CH-ET-G-M, 2/60s CH-Comp.-Org.-G-Ex., 7s OE, 16s OE, 20s OE	Tamil Nadu
14	106s C-Comp., 120s C-Comp., 2/100s C-Comp.-DHPR, 2/120s C-Comp.-DHPR, 60s C-Comp.-DHCR, 80s C-Comp.-DHCR	Tamil Nadu
15	40s C-Comp., 60s C-Comp., 80s C-Comp.	Tamil Nadu

**Table C (contd...)**

Mill ref. no.	Counts	State
16	92s C	Kerala
17	40s K, 2/40s P/C-K (70:30)	Tamil Nadu
18	40s KH, 40s KH-Comp., 61s C-Comp.	Tamil Nadu
19	60s C, 90s C, 105s C, 60s C-Comp., 105s C-Comp.	Tamil Nadu
20	60s C, 76s C-Comp., 80s C-Comp., 100s C-Comp., 105s C-Comp., 120s C-Comp., 80s Excel	Tamil Nadu
21	40s C-Comp., 50s C-Comp., 60s C-Comp., 61s C-Comp.	Dadra & Nagar Haveli
22	20s K-Comp., 30s K-Comp., 32s C-Comp., 60s C-Comp., 25s CH-Comp., 26s CH-Comp., 30s CH-Comp., 34s CH-Comp., 40s CH-Comp., 45s CH-Comp.	Tamil Nadu
23	40s C-Comp., 41s C-Comp., 60s C-Comp.	Tamil Nadu
24	16s K, 2/20s K, 20s K-Ex., 2/22s K-Ex., 16s C	Tamil Nadu
25	80s C, 105s C, 40s C-Comp., 16s OE, 20s OE	Tamil Nadu
26	14s KH, 30s KH, 2/20s KH-Ex., 2/22s KH-Ex., 2/24s KH-Ex., 26s CH, 30s CH-Comp., 24s CH-Ex., 20s CH-Comp.-Ex.	Haryana
27	16s CH, 20s CH, 24s CH, 26s CH, 30s CH, 32s CH	Madhya Pradesh
28	25s KH-Slub, 20s CH-Comp., 25s CH-Comp., 30s CH-Comp., 30s CH-Comp.-Recycled, 34s CH-Comp., 36s CH-Comp., 42s CH-Comp., 25s CH-Comp.-Org.	Tamil Nadu
29	70s C-Comp.-Premium, 100s C-Comp.-Premium, 105s C-Comp., 62s P/C-K (70:30), 2/60s P/C-C (67:33), 2/80s P/C-C (65:35)	Tamil Nadu
30	60s C, 67s C, 90s C, 92s C, 80s C-Comp., 90s C-Comp., 92s C-Comp., 95s C-Comp.	Tamil Nadu



**Table C (contd...)**

Mill ref. no.	Counts	State
31	2/120s C-ET, 80s C-Comp., 94s C-Comp., 100s C-Comp.-Premium	Andhra Pradesh
32	61s C-Comp., 50s CH, 60s CH-Comp., 50s C-Comp.-Cheese-Ex.	Telangana
33	56s K-Comp.	Tamil Nadu
34	61s C-Comp., 84s C-Comp., 80s C-Comp.-Ex.	Tamil Nadu
35	38s KH-Comp., 40s C-Comp., 50s C-Comp., 30s CH, 32s CH, 40s CH-Comp.-Ex.	Gujarat
36	52s P/C-K (70:30), 62s P/C-K (70:30), 80s P/C-C (65:35), 62s P/C-C-HT (65:35)	Tamil Nadu
37	40s K, 41s K, 41s K-Comp., 40s C, 61s C-Comp.	Tamil Nadu
38	80s C-Comp., 92s C-Comp., 105s C-Comp.	Tamil Nadu
39	10s K, 20s K, 30s C-Slub, 40s C-Slub, 60s C-Slub, 40s C-CS, 50s C-Comp., 60s C-Comp., 60s C-Comp.-Slub, 60s C-Comp.-HT	Tamil Nadu
40	30s C-Comp.-Ex., 24s C-Comp.-Ex., 24s CH-Comp.-Ex., 30s CH-Comp.-Ex., 32s CH-Comp.-Ex., 40s CH-Comp.-Ex.	Gujarat
41	40s K, 60s K, 40s K-SHPR, 2/40s P/C-K (70:30)	Tamil Nadu
42	34s K, 2/20s K, 2/30s K, 2/10s K-Slub	Tamil Nadu
43	20s K, 2/40s K-ET, 16s C, 20s C, 30s C-Comp., 24s CH, 26s CH, 30s CH, 30s CH-Comp.	Gujarat
44	20s K, 32s K, 40s K, 41s K, 40s KH, 40s C, 40s C-CS, 40s C-Comp., 60s C-Comp., 42s C-Comp.-HT	Tamil Nadu
45	24s P/C-CH (48:52), 30s P/C-CH (48:52), 34s P/C-CH (48:52), 20s P/C-CH-Ex. (65:35), 20s P/C-CH-Ex. (48:52)	Punjab

**Table C (contd...)**

Mill ref. no.	Counts	State
46	41s K-Comp.-Ex., 60s C, 80s C, 60s C-HT, 76s C-Comp., 90s C-Comp., 95s C-Comp., 100s C-Comp., 105s C-Comp., 82s C-Comp.-DHCR	Tamil Nadu
47	41s K	Tamil Nadu
48	40s C-Comp., 60s C-Comp., 50s CH-Comp., 60s CH-Comp., 20s OE	Tamil Nadu
49	41s K, 32s K-Comp., 41s K-Comp.	Karnataka
50	30s P/C-C (65:35), 40s P/C-C (65:35), 45s P/C-C (65:35), 2/60s P/C-C (65:35), 2/80s P/C-C (65:35), 40s P/C-C (40:60), 60s P/C-C-Comp. (40:60)	Tamil Nadu
51	25s CH-Comp., 30s CH-Comp., 34s CH-Comp., 40s CH-Comp.	Tamil Nadu
52	2/20s K-SHPR, 2/23s K-Ex., 2/30s K-Ex., 105s C-Comp., 60s C-Comp.-DHPR, 2/120s C-Comp.-DHPR, 80s C-Comp.-DHCR, 2/40s C-Ex., 10s OE-SHPR, 2/20s OE-SHPR	Tamil Nadu
53	40s C-Comp., 60s C-Comp., 32s CH-Comp.-Ex., 34s CH-Comp.-Ex., 40s CH-Comp.-Ex., 42s P/C-K-Comp. (40:60), 45s P/C-C-Comp. (65:35), 60s P/C-C-Comp.-recycled (40:60)	Tamil Nadu
54	41s C-Comp., 60s C-Comp., 60s Modal-Comp.	Tamil Nadu
55	60s C, 60s C-Comp., 61s C-Comp., 63s C-Comp., 80s C-Comp., 100s C-Comp., 24s P/C-KH (40:60), 30s P/C-KH (40:60)	Tamil Nadu
56	100s C-Comp., 60s C-Comp.-Ex., 80s C-Comp.-Ex.	Tamil Nadu
57	34s CH, 36s CH, 30s CH-Comp., 34s CH-Comp., 40s CH-Comp.	Tamil Nadu
58	25s KH, 30s KH, 30s CH, 25s CH-Comp., 30s CH-Comp.	Tamil Nadu
59	20s K, 30s K-Comp., 16s C, 2/40s C-ET, 30s C-Comp., 40s CH-Comp., 16s OE, 20s OE	Rajasthan
60	40s C-Comp., 50s C-Comp., 40s CH-Comp., 16s OE, 20s OE	Tamil Nadu
61	50s C-Comp., 60s C-Comp.-Premium, 70s C-Comp., 36s CH-Comp.	Tamil Nadu
62	40s P/C-K (65:35), 40s P/C-C-Comp. (65:35), 45s P/C-C-Comp. (65:35), 24s P/C-CH-Comp. (40:60), 30s P/C-CH-Comp. (40:60), 34s P/C-CH-Comp. (40:60), 30s AJ-V	Tamil Nadu

**Table D** Movement of YSP, RMC and NOV in 11 popular counts between months

Period	20s OE				40s K			
	YSP (Rs/kg)	RMC (Rs/kg of yarn)	NOV (Rs/kg of yarn)	RMC as % of YSP	YSP (Rs/kg)	RMC (Rs/kg of yarn)	NOV (Rs/kg of yarn)	RMC as % of YSP
April'18-March'19								
<i>Average</i>	149	106	43	72	213	147	66	69
<i>Minimum</i>	139	97	26	67	206	135	59	64
<i>Maximum</i>	162	117	54	82	220	156	76	72
April'19-March'20								
<i>Average</i>	139	103	36	74	206	140	65	68
<i>Minimum</i>	130	94	29	72	195	127	52	62
<i>Maximum</i>	154	121	42	81	218	153	78	75
June'20-March'21								
<i>Average</i>	135	92	43	68	211	127	85	60
<i>Minimum</i>	121	80	35	64	187	117	68	58
<i>Maximum</i>	155	101	55	73	245	144	101	64
April'21-March'22								
<i>Average</i>	171	107	64	63	278	187	91	67
<i>Minimum</i>	152	89	54	57	241	147	78	59
<i>Maximum</i>	206	128	78	66	328	247	103	76
April'22-March'23								
April 2022	224	158	66	70	359	265	94	74
May	246	176	70	72	366	276	90	76
June	261	189	72	72	367	309	58	84
July	213	162	51	77	348	315	33	90
August	220	156	64	71	364	273	91	75
September	207	157	50	77	360	299	61	83
October	194	152	42	78	336	281	55	84
November	188	155	33	83	322	249	73	77
December	203	171	32	84	319	249	70	78
January 2023	201	169	32	84	296	230	66	78
February	202	176	26	87	263	199	64	76
March	209	172	37	82	268	206	62	77
<i>Average</i>	214	166	48	78	331	262	68	79
<i>Minimum</i>	188	152	26	70	263	199	33	74
<i>Maximum</i>	261	189	72	87	367	315	94	90
April 2023	203	167	36	82	261	198	63	76
May	201	158	43	79	273	206	67	76
June	191	145	46	76	270	205	65	76
July	178	141	37	80	261	200	61	77
August	187	143	44	76	280	200	80	72
September	187	146	41	78	269	202	67	76
October	179	140	39	79	278	206	72	74
November	175	137	38	79	248	189	59	76
December	174	132	42	77	258	192	66	75
January 2024	167	130	37	78	258	192	66	75
February	170	132	38	77	257	189	68	74
March	176	137	39	78	270	206	64	76
<i>Average</i>	182	142	40	78	265	199	67	75
<i>Minimum</i>	167	130	36	76	248	189	59	72
<i>Maximum</i>	203	167	46	82	280	206	80	77

**Table D (contd...)**

Period	40s C				60s C			
	YSP (Rs/kg)	RMC (Rs/kg of yarn)	NOV (Rs/kg of yarn)	RMC as % of YSP	YSP (Rs/kg)	RMC (Rs/kg of yarn)	NOV (Rs/kg of yarn)	RMC as % of YSP
April'18-March'19								
<i>Average</i>	238	165	73	70	286	170	115	60
<i>Minimum</i>	225	152	64	65	272	156	106	56
<i>Maximum</i>	247	178	81	73	294	181	127	62
April'19-March'20								
<i>Average</i>	225	160	65	71	268	167	101	63
<i>Minimum</i>	210	153	54	69	255	155	86	57
<i>Maximum</i>	237	166	71	75	280	176	117	67
June'20-March'21								
<i>Average</i>	229	154	75	68	292	152	140	53
<i>Minimum</i>	200	141	50	60	243	143	100	46
<i>Maximum</i>	281	169	112	75	373	172	201	59
April'21-March'22								
<i>Average</i>	313	221	92	70	396	219	178	55
<i>Minimum</i>	249	171	71	63	365	164	137	45
<i>Maximum</i>	378	286	107	77	441	290	209	68
April'22-March'23								
April 2022	402	311	91	77	447	303	144	68
May	420	345	75	82	452	338	114	75
June	408	329	79	81	438	318	120	73
July	370	346	24	94	423	341	82	81
August	381	292	89	77	435	348	87	81
September	396	279	117	71	419	353	66	85
October	340	254	86	75	376	327	49	87
November	318	245	73	77	375	293	82	78
December	313	256	57	82	356	259	97	73
January 2023	293	238	55	81	329	234	95	71
February	297	252	45	85	335	222	113	67
March	289	224	65	78	334	221	113	66
<i>Average</i>	352	281	71	80	393	296	97	75
<i>Minimum</i>	289	224	24	71	329	221	49	66
<i>Maximum</i>	420	346	117	94	452	353	144	87
April 2023	292	234	58	80	356	243	113	67
May	285	237	48	83	348	213	135	61
June	269	214	55	80	330	218	112	66
July	267	221	46	83	322	216	106	67
August	278	216	62	78	324	223	101	69
September	278	225	53	81	328	228	100	69
October	263	224	39	86	339	235	104	70
November	-	-	-	-	337	230	107	69
December	-	-	-	-	321	220	101	68
January 2024	-	-	-	-	325	216	109	66
February	282	196	86	70	321	213	108	67
March	285	218	67	77	338	204	134	60
<i>Average</i>	277	220	57	80	332	221	111	67
<i>Minimum</i>	263	196	39	70	321	204	100	60
<i>Maximum</i>	292	237	86	86	356	243	135	70

**Table D (contd...)**

Period	80s C				40s C-Comp.			
	YSP (Rs/kg)	RMC (Rs/kg of yarn)	NOV (Rs/ kg of yarn)	RMC as % of YSP	YSP (Rs/kg)	RMC (Rs/kg of yarn)	NOV (Rs/ kg of yarn)	RMC as % of YSP
April'18-March'19								
<i>Average</i>	341	172	169	50	253	166	87	66
<i>Minimum</i>	323	163	156	48	243	157	74	62
<i>Maximum</i>	354	180	181	52	260	177	97	70
April'19-March'20								
<i>Average</i>	327	156	171	48	239	160	79	67
<i>Minimum</i>	277	140	115	42	229	148	67	63
<i>Maximum</i>	347	171	198	58	253	167	89	71
June'20-March'21								
<i>Average</i>	343	156	187	46	246	149	97	61
<i>Minimum</i>	313	146	162	42	209	137	69	54
<i>Maximum</i>	412	171	241	49	300	163	137	69
April'21-March'22								
<i>Average</i>	482	239	243	50	334	209	125	62
<i>Minimum</i>	439	189	182	42	285	164	95	53
<i>Maximum</i>	546	314	284	64	391	292	145	76
April'22-March'23								
April 2022	577	296	281	52	402	306	96	76
May	578	294	284	52	423	324	99	77
June	493	336	157	68	424	341	83	81
July	508	318	190	65	395	344	51	87
August	456	340	116	75	396	340	56	86
September	442	324	118	74	387	326	61	85
October	434	354	80	82	346	293	53	85
November	393	250	143	64	325	272	53	84
December	396	285	111	72	321	236	85	73
January 2023	381	233	148	61	323	243	80	76
February	388	213	175	55	295	223	72	76
March	386	208	178	54	296	213	83	72
<i>Average</i>	453	287	165	64	361	288	73	80
<i>Minimum</i>	381	208	80	52	295	213	51	72
<i>Maximum</i>	578	354	284	82	424	344	99	87
April 2023	379	211	168	56	296	213	83	72
May	443	210	233	49	288	215	73	75
June	379	220	159	58	289	218	71	75
July	367	216	151	59	275	210	65	76
August	365	200	165	55	279	206	73	74
September	366	190	176	52	284	211	73	74
October	356	202	154	57	282	212	70	75
November	352	208	144	59	283	211	72	75
December	353	212	141	60	276	201	75	73
January 2024	364	201	163	55	278	196	82	71
February	364	200	164	55	276	197	79	71
March	414	199	215	48	289	203	86	70
<i>Average</i>	375	206	169	55	283	208	75	74
<i>Minimum</i>	352	190	141	48	275	196	65	70
<i>Maximum</i>	443	220	233	60	296	218	86	76

**Table D (contd...)**

Period	50s C-Comp.				60s C-Comp.			
	YSP (Rs/kg)	RMC (Rs/ kg of yarn)	NOV (Rs/ kg of yarn)	RMC as % of YSP	YSP (Rs/kg)	RMC (Rs/ kg of yarn)	NOV (Rs/ kg of yarn)	RMC as % of YSP
April'18-March'19								
<i>Average</i>	292	170	121	58	303	172	131	57
<i>Minimum</i>	279	161	110	54	290	160	122	54
<i>Maximum</i>	302	184	137	61	313	181	141	59
April'19-March'20								
<i>Average</i>	275	164	111	60	288	168	120	59
<i>Minimum</i>	263	156	97	57	269	156	105	55
<i>Maximum</i>	291	168	126	63	309	174	135	62
June'20-March'21								
<i>Average</i>	297	161	136	55	311	158	154	51
<i>Minimum</i>	259	147	100	48	259	148	111	44
<i>Maximum</i>	378	178	200	62	397	173	224	57
April'21-March'22								
<i>Average</i>	401	215	186	53	436	221	215	50
<i>Minimum</i>	354	172	150	45	391	174	183	44
<i>Maximum</i>	474	281	216	62	489	299	235	62
April'22-March'23								
April 2022	465	300	165	65	510	309	201	62
May	486	336	150	70	507	322	185	64
June	464	326	138	70	510	343	167	68
July	431	356	75	83	484	334	150	71
August	431	310	121	73	453	340	113	75
September	425	311	114	73	449	346	103	78
October	414	320	94	79	442	342	100	79
November	423	314	109	75	395	290	105	74
December	354	268	86	75	396	263	133	67
January 2023	365	261	104	71	365	245	120	67
February	329	203	126	62	370	237	133	64
March	351	212	139	60	370	236	134	64
<i>Average</i>	411	293	118	71	438	301	137	69
<i>Minimum</i>	329	203	75	60	365	236	100	62
<i>Maximum</i>	486	356	165	83	510	346	201	79
April 2023	330	208	122	63	366	231	135	63
May	333	226	107	68	361	231	130	64
June	332	224	108	68	348	231	117	66
July	334	229	105	69	337	219	118	65
August	315	212	103	67	344	222	122	64
September	345	214	131	62	369	231	138	63
October	318	217	101	69	346	218	128	63
November	316	211	105	67	371	249	122	66
December	309	203	106	66	366	236	130	64
January 2024	309	198	111	64	363	234	129	64
February	316	196	120	62	327	199	128	61
March	322	207	115	65	339	199	140	59
<i>Average</i>	323	212	111	66	353	225	128	63
<i>Minimum</i>	309	196	101	62	327	199	117	59
<i>Maximum</i>	345	229	131	69	371	249	140	66

**Table D (contd...)**

Period	80s C-Comp.				30s CH			
	YSP (Rs/kg)	RMC (Rs/kg of yarn)	NOV (Rs/ kg of yarn)	RMC as % of YSP	YSP (Rs/kg)	RMC (Rs/ kg of yarn)	NOV (Rs/ kg of yarn)	RMC as % of YSP
April'18-March'19								
<i>Average</i>	386	196	190	50	216	158	59	73
<i>Minimum</i>	348	175	173	48	208	146	54	70
<i>Maximum</i>	407	215	201	53	226	166	65	75
April'19-March'20								
<i>Average</i>	376	187	189	49	207	152	55	74
<i>Minimum</i>	361	174	175	47	197	140	43	69
<i>Maximum</i>	394	196	198	51	225	165	64	79
June'20-March'21								
<i>Average</i>	401	187	214	47	212	141	72	67
<i>Minimum</i>	363	174	165	40	186	129	55	63
<i>Maximum</i>	487	199	292	54	259	165	94	71
April'21-March'22								
<i>Average</i>	555	239	315	43	303	208	95	68
<i>Minimum</i>	512	197	271	38	271	170	79	62
<i>Maximum</i>	609	311	357	54	357	273	108	78
April'22-March'23								
April 2022	589	314	275	54	376	289	87	77
May	571	313	258	56	400	316	84	79
June	564	335	229	60	406	325	81	81
July	524	336	188	64	374	325	49	87
August	577	360	217	64	357	308	49	86
September	528	347	181	67	345	284	61	84
October	477	328	149	70	404	356	48	86
November	469	301	168	64	286	232	54	81
December	438	256	182	59	283	225	58	79
January 2023	440	244	196	56	270	221	49	82
February	421	251	170	60	274	223	51	82
March	413	235	178	57	280	230	50	82
<i>Average</i>	501	302	199	61	338	278	60	82
<i>Minimum</i>	413	235	149	54	270	221	48	77
<i>Maximum</i>	589	360	275	70	406	356	87	87
April 2023	415	235	180	57	278	227	51	82
May	428	246	182	58	265	209	56	79
June	419	243	176	58	255	213	42	84
July	437	231	206	54	250	205	45	82
August	419	244	175	58	252	208	44	83
September	415	232	183	56	257	215	42	84
October	426	234	192	55	261	213	48	82
November	419	232	187	56	257	201	56	78
December	414	226	188	55	250	197	53	79
January 2024	409	235	174	58	254	197	57	78
February	409	223	186	55	257	204	53	79
March	415	224	191	54	268	210	58	78
<i>Average</i>	419	234	185	56	259	208	50	81
<i>Minimum</i>	409	223	174	54	250	197	42	78
<i>Maximum</i>	437	246	206	58	278	227	58	84

**Table D (contd...)**

Period	40s CH			
	YSP (Rs/kg)	RMC (Rs/ kg of yarn)	NOV (Rs/ kg of yarn)	RMC as % of YSP
April'18-March'19				
<i>Average</i>	235	165	70	70
<i>Minimum</i>	225	151	61	67
<i>Maximum</i>	242	179	79	75
April'19-March'20				
<i>Average</i>	226	153	73	68
<i>Minimum</i>	217	138	61	63
<i>Maximum</i>	240	168	83	73
June'20-March'21				
<i>Average</i>	229	138	91	61
<i>Minimum</i>	206	124	70	56
<i>Maximum</i>	268	156	112	66
April'21-March'22				
<i>Average</i>	321	220	101	68
<i>Minimum</i>	247	163	67	58
<i>Maximum</i>	386	307	119	82
April'22-March'23				
April 2022	400	318	82	80
May	418	344	74	83
June	445	350	95	79
July	396	336	60	85
August	374	313	61	84
September	-	-	-	-
October	319	267	52	85
November	318	234	84	74
December	296	226	70	76
January 2023	288	232	56	81
February	290	214	76	74
March	281	212	69	75
<i>Average</i>	348	277	71	79
<i>Minimum</i>	281	212	52	74
<i>Maximum</i>	445	350	95	85
April 2023	280	207	73	74
May	277	210	67	76
June	276	207	69	75
July	259	198	61	77
August	264	207	57	78
September	286	217	69	76
October	280	207	73	74
November	275	201	74	73
December	275	198	77	72
January 2024	281	210	71	75
February	286	211	75	74
March	-	-	-	-
<i>Average</i>	276	207	70	75
<i>Minimum</i>	259	198	57	72
<i>Maximum</i>	286	217	77	78



**Count descriptions**

<i>AJ</i>	-	<i>Air jet spinning</i>
<i>OE</i>	-	<i>Rotor spinning</i>
<i>Ex.</i>	-	<i>Export</i>
<i>K</i>	-	<i>Carded</i>
<i>KH</i>	-	<i>Carded hosiery</i>
<i>SC</i>	-	<i>Semi combed</i>
<i>C</i>	-	<i>Combed</i>
<i>SCH</i>	-	<i>Semi combed hosiery</i>
<i>CH</i>	-	<i>Combed hosiery</i>
<i>HT</i>	-	<i>High twist</i>
<i>ST</i>	-	<i>“S” twist</i>
<i>CS</i>	-	<i>Core spun</i>
<i>Pl.</i>	-	<i>Parallel</i>
<i>P</i>	-	<i>100% polyester</i>
<i>V</i>	-	<i>100% viscose</i>
<i>Lyo</i>	-	<i>Lyocell</i>
<i>MM</i>	-	<i>Micro Modal</i>
<i>P/C</i>	-	<i>Polyester cotton</i>
<i>C/PVA</i>	-	<i>Cotton Polyvinyl Alcohol</i>
<i>P/V</i>	-	<i>Polyester viscose</i>
<i>P/M</i>	-	<i>Polyester modal</i>
<i>M/C</i>	-	<i>Modal cotton</i>
<i>C/V</i>	-	<i>Cotton/viscose</i>
<i>C/T</i>	-	<i>Cotton/Tencel</i>
<i>C/B</i>	-	<i>Cotton/bamboo</i>
<i>C/L</i>	-	<i>Cotton/linen</i>
<i>C/Excell</i>	-	<i>Cotton/Excell</i>
<i>SHPR</i>	-	<i>Single hank plain reeling</i>
<i>DHPR</i>	-	<i>Double hank plain reeling</i>
<i>DHCR</i>	-	<i>Double hank cross reeling</i>
<i>FHPR</i>	-	<i>Four hank plain reeling</i>
<i>FHCR</i>	-	<i>Four hank cross reeling</i>
<i>5HPR</i>	-	<i>Five hank plain reeling</i>
<i>Comp.</i>	-	<i>Compact</i>
<i>Org.</i>	-	<i>Organic cotton</i>
<i>G</i>	-	<i>Gassed</i>
<i>Mer.</i>	-	<i>Mercerised</i>
<i>ET</i>	-	<i>Eli-twist</i>
<i>Mel.</i>	-	<i>Melange</i>
<i>D</i>	-	<i>Dyed</i>

**FORMAT FOR COLLECTING DATA FOR THE 131<sup>st</sup> ONLINE SURVEY OF RMC AND YSP**

**1. Count-wise average yarn selling price and raw material cost**

**Month: April 2024**

(Give for up to 10 counts based on quantum of yarn produced)

Particulars ↓	Counts* →									
	Local/Export									
i) Actual count (Ne)										
ii) Ex-mill yarn selling price (Rs/kg) <sup>@</sup> (YSP)										
iii) Avg. raw material cost (Rs/kg)										
iv) Avg. clean raw material cost (Rs/kg of yarn) <sup>#</sup> (RMC)										
v) Yarn realisation (%) (YR)										
vi) Average spindle speed (RPM)										
vii) TPI										
viii) Production/spindle (or rotor)/8 hours (g) (P)										
ix) Total yarn production for the month (kg)										
x) Spindle utilisation (%)										

\*' Please specify whether carded/combed/doubled/OE/warp/weft/hosiery/compact/SHPR/DHPR/DHCR/PV/PC/P/VSF/dyed/gassed/mercerised/high twist, etc.

@' Please deduct expenses like commissions, ocean freight, inland freight, L/C usance interest, sales tax, etc. from the gross price. In the case of export yarn, suitably adjust the ex-mill price for various incentives like DBK, DEPB, FMS, etc. and also for exchange fluctuations.

#' Weighted average cost of various components of raw material used including cost of waste added (if any), after taking into account price fetchable for waste and yarn realisation.

$$\text{Clean raw material cost (Rs/kg of yarn)} = \left[ \frac{\text{Raw material cost (Rs/kg)}}{\text{Yarn realisation (\%)}} \times 100 \right] - \text{Overall selling price of different wastes (Rs/kg of yarn)}$$

**2. Count-wise yarn quality** (Final package)

(for the same 10 counts as per item 1)

Particulars ↓	Counts →									
		Count CV (%)								
Strength CV (%)										
CSP										
Unevenness (U%)										
Imperfections/1000m	Thin places (-50%)									
	Thick places (+50%)									
	Neps (+200% ring spun) (+280% rotor spinning)									
	Total									
Hairiness index										

\*\*\*\*\*